

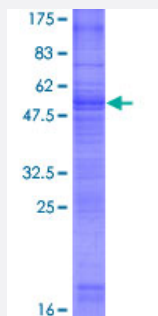
Full-Length

GPM6B (Human) Recombinant Protein (P01)

Catalog # H00002824-P01

Size 25 ug, 10 ug

Applications



Specification

Product Description

Human GPM6B full-length ORF (NP_001001996.1, 1 a.a. - 305 a.a.) recombinant protein with GST-tag at N-terminal.

Sequence

MKPAMETAAEENTEQSQERKVNSRAEMEIGRYHWMYPGSKNHQYHPVPTLGDRASPLSSPGCF
ECCIKCLGGVPYASLVATILCFSGVALFCGCGHVALAGTVAILEQHFSTNASDHALLSEVIQLMQYV
YGIASFFFLYGIIILAEGFYTTSVAVKELHGEFKTTACGRCISGMFVFLTYVLGVAWLGVFGFSAVPV
FMFYNIWSTCEVIKSPQTNGTTGVEQICVDIRQYGIIIPWNAFP GKICGSALENICNTNEFYMSYHLFV
ACAGAGATVIALLYMMATTYNYAVLKFKSREDCCTKF

Host

Wheat Germ (in vitro)

Theoretical MW (kDa)

59.9

Interspecies Antigen Sequence

Mouse (94)

Preparation Method

[in vitro wheat germ expression system](#)

Purification

Glutathione Sepharose 4 Fast Flow

Quality Control Testing

12.5% SDS-PAGE Stained with Coomassie Blue.

Storage Buffer

50 mM Tris-HCl, 10 mM reduced Glutathione, pH=8.0 in the elution buffer.

Storage Instruction

Store at -80°C. Aliquot to avoid repeated freezing and thawing.

Note

Best use within three months from the date of receipt of this protein.

Applications

- Enzyme-linked Immunoabsorbent Assay
- Western Blot (Recombinant protein)
- Antibody Production
- Protein Array

Gene Info — GPM6B

Entrez GeneID[2824](#)**GeneBank Accession#**[NM_001001996.1](#)**Protein Accession#**[NP_001001996.1](#)**Gene Name**

GPM6B

Gene Alias

M6B, MGC17150, MGC54284

Gene Description

glycoprotein M6B

Omim ID[300051](#)**Gene Ontology**[Hyperlink](#)**Gene Summary**

This gene encodes a membrane glycoprotein that belongs to the proteolipid protein family. Proteolipid protein family members are expressed in most brain regions and are thought to be involved in cellular housekeeping functions, such as membrane trafficking and cell-to-cell communication. [provided by RefSeq]

Other Designations

OTTHUMP00000022946|OTTHUMP00000022947|protolipid M6B

Disease

- [Anemia](#)

- [Hereditary Central Nervous System Demyelinating Diseases](#)