

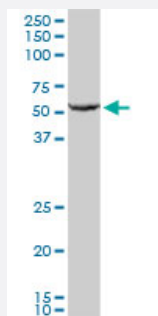
MaxPab®

GPI purified MaxPab mouse polyclonal antibody (B01P)

Catalog # H00002821-B01P

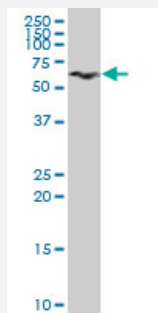
Size 50 ug

Applications



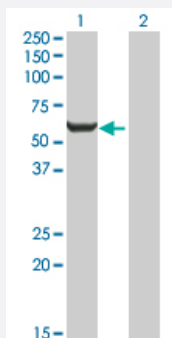
Western Blot (Tissue lysate)

GPI MaxPab polyclonal antibody. Western Blot analysis of GPI expression in human liver.



Western Blot (Tissue lysate)

GPI MaxPab polyclonal antibody. Western Blot analysis of GPI expression in rat brain.



Western Blot (Transfected lysate)

Western Blot analysis of GPI expression in transfected 293T cell line ([H00002821-T01](#)) by GPI MaxPab polyclonal antibody.

Lane 1: GPI transfected lysate(61.49 KDa).

Lane 2: Non-transfected lysate.

Specification

Product Description

Mouse polyclonal antibody raised against a full-length human GPI protein.

Immunogen	GPI (AAH04982.1, 1 a.a. ~ 558 a.a) full-length human protein.
Sequence	MAALTRDPQFQKLQQWYREHRSELNLRRLFDANKDRFNHFSLTNTNHHGHLVDYSKNLVTEDVM RMLVDLAKSRGVEAARERMFNGEKINYTEGRVLHVALRNRSNTPILVDGKDVMPENVKVLDKM KSFCQVRVSGDWKGYTGKTITDVINIGIGGSDLGPLMVTEALKPYSSGGPRVWVYVSNIDGTHIAKTL AQLNPESSLFIIASKTFTTQETITNAETAKEWFLQAAKDPSAVAKHFVALSTNTTKVKEFGIDPQNM FEFWDWVGGRYSLWSAIGLSIALHVGFDFNFEQLLSGAHWMDQHFRTTLEKNAPVLLALLGWYI NCFGCEHAMLPHYDQYLHRFAAYFQQGDMESNGKYITKSGTRVDHQTGPVWGEPTNGQHAFY QLIHQGTKMIPCDFLIPVQTQHPHPIRGLHKKILLANFLAQTEALMRGKSTEEARKELQAAGKSPEDL ERLLPHKVFEGNRPTNSVFTKLTPFMLGALVAMYEHKIFVQGIWDINSFDQWGVLELGGKQLAKKIE PELDGSAQVTSHDASTNGLINFIKQQREARVQ
Host	Mouse
Reactivity	Human, Rat
Quality Control Testing	Antibody reactive against mammalian transfected lysate.
Storage Buffer	In 1x PBS, pH 7.4
Storage Instruction	Store at -20°C or lower. Aliquot to avoid repeated freezing and thawing.

Applications

- Western Blot (Tissue lysate)

GPI MaxPab polyclonal antibody. Western Blot analysis of GPI expression in human liver.

[Protocol Download](#)

- Western Blot (Tissue lysate)

GPI MaxPab polyclonal antibody. Western Blot analysis of GPI expression in rat brain.

[Protocol Download](#)

- Western Blot (Transfected lysate)

Western Blot analysis of GPI expression in transfected 293T cell line ([H00002821-T01](#)) by GPI MaxPab polyclonal antibody.

Lane 1: GPI transfected lysate(61.49 KDa).

Lane 2: Non-transfected lysate.

[Protocol Download](#)

Gene Info — GPI

Entrez GeneID

[2821](#)

GeneBank Accession#	BC004982.1
Protein Accession#	AAH04982.1
Gene Name	GPI
Gene Alias	AMF, GNPI, NLK, PGI, PHI, SA-36
Gene Description	glucose phosphate isomerase
Omim ID	172400
Gene Ontology	Hyperlink
Gene Summary	<p>This gene belongs to the GPI family whose members encode multifunctional phosphoglucose isomerase proteins involved in energy pathways. The protein encoded by this gene is a dimeric enzyme that catalyzes the reversible isomerization of glucose-6-phosphate and fructose-6-phosphate. The protein functions in different capacities inside and outside the cell. In the cytoplasm, the gene product is involved in glycolysis and gluconeogenesis, while outside the cell it functions as a neurotrophic factor for spinal and sensory neurons. Defects in this gene are the cause of nonspherocytic hemolytic anemia and a severe enzyme deficiency can be associated with hydrops fetalis, immediate neonatal death and neurological impairment. [provided by RefSeq]</p>
Other Designations	autocrine motility factor glucose-6-phosphate isomerase hexose monophosphate isomerase hexosephosphate isomerase neuroleukin oxoisomerase phosphoglucose isomerase phosphohexomutase phosphohexose isomerase phosphosaccharomutase sperm antigen-36

Pathway

- [Amino sugar and nucleotide sugar metabolism](#)
- [Biosynthesis of alkaloids derived from histidine and purine](#)
- [Biosynthesis of alkaloids derived from ornithine](#)
- [Biosynthesis of alkaloids derived from shikimate pathway](#)
- [Biosynthesis of alkaloids derived from terpenoid and polyketide](#)
- [Biosynthesis of phenylpropanoids](#)
- [Biosynthesis of plant hormones](#)
- [Biosynthesis of terpenoids and steroids](#)
- [Glycolysis / Gluconeogenesis](#)

- [Metabolic pathways](#)
- [Pentose phosphate pathway](#)
- [Starch and sucrose metabolism](#)