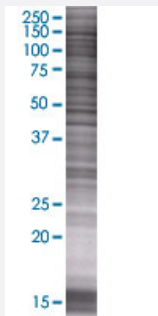


GOLGA2 293T Cell Transient Overexpression Lysate(Denatured)

Catalog # H00002801-T02

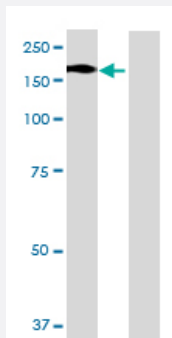
Size 100 uL

Applications



SDS-PAGE Gel

GOLGA2 transfected lysate.



Western Blot

Lane 1: GOLGA2 transfected lysate (109.01 KDa)

Lane 2: Non-transfected lysate.

Specification

Transfected Cell Line 293T

Plasmid pCMV-GOLGA2 full-length

Host Human

Theoretical MW (kDa) 109.01

Quality Control Testing Transient overexpression cell lysate was tested with Anti-GOLGA2 antibody ([H00002801-B02](#)) by Western Blots.
 SDS-PAGE Gel
 GOLGA2 transfected lysate.
 Western Blot
 Lane 1: GOLGA2 transfected lysate (109.01 KDa)
 Lane 2: Non-transfected lysate.

Storage Buffer

1X Sample Buffer (50 mM Tris-HCl, 2% SDS, 10% glycerol, 300 mM 2-mercaptoethanol, 0.01% Bromophenol blue)

Storage Instruction

Store at -80°C. Aliquot to avoid repeated freezing and thawing.

Applications

- Western Blot

Gene Info — GOLGA2

Entrez GeneID[2801](#)**GeneBank Accession#**[NM_004486.4](#)**Protein Accession#**[NP_004477.2](#)**Gene Name**

GOLGA2

Gene Alias

GM130, MGC20672

Gene Description

golgi autoantigen, golgin subfamily a, 2

Omim ID[602580](#)**Gene Ontology**[Hyperlink](#)**Gene Summary**

The Golgi apparatus, which participates in glycosylation and transport of proteins and lipids in the secretory pathway, consists of a series of stacked cisternae (flattened membrane sacs). Interactions between the Golgi and microtubules are thought to be important for the reorganization of the Golgi after it fragments during mitosis. The golgins are a family of proteins, of which the protein encoded by this gene is a member, that are localized to the Golgi. This encoded protein has been postulated to play roles in the stacking of Golgi cisternae and in vesicular transport. Several alternatively spliced transcript variants of this gene have been described, but the full-length nature of these variants has not been determined. [provided by RefSeq]

Other Designations

Golgi autoantigen, golgin subfamily a, 2|Golgi matrix protein GM130|OTTHUMP00000022234|SY11 protein|golgin-95