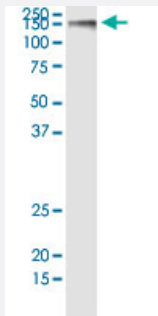


GOLGA2 (Human) IP-WB Antibody Pair

Catalog # H00002801-PW2

Size 1 Set

Applications



Immunoprecipitation of GOLGA2 transfected lysate using rabbit polyclonal anti-GOLGA2 and Protein A Magnetic Bead ([U0007](#)), and immunoblotted with mouse purified polyclonal anti-GOLGA2.

Specification

Product Description	This IP-WB antibody pair set comes with one antibody for immunoprecipitation and another to detect the precipitated protein in western blot.
Reactivity	Human
Quality Control Testing	Immunoprecipitation-Western Blot (IP-WB) Immunoprecipitation of GOLGA2 transfected lysate using rabbit polyclonal anti-GOLGA2 and Protein A Magnetic Bead (U0007), and immunoblotted with mouse purified polyclonal anti-GOLGA2.
Supplied Product	Antibody pair set content: 1. Antibody pair for IP: rabbit polyclonal anti-GOLGA2 (300 ul) 2. Antibody pair for WB: mouse purified polyclonal anti-GOLGA2 (50 ug)
Storage Instruction	Store reagents of the antibody pair set at -20°C or lower. Please aliquot to avoid repeated freeze thaw cycle. Reagents should be returned to -20°C storage immediately after use.

Applications

- Immunoprecipitation-Western Blot

[Protocol Download](#)

Gene Info — GOLGA2

Entrez GeneID [2801](#)**Gene Name** GOLGA2**Gene Alias** GM130, MGC20672**Gene Description** golgi autoantigen, golgin subfamily a, 2**Omim ID** [602580](#)**Gene Ontology** [Hyperlink](#)

Gene Summary

The Golgi apparatus, which participates in glycosylation and transport of proteins and lipids in the secretory pathway, consists of a series of stacked cisternae (flattened membrane sacs). Interactions between the Golgi and microtubules are thought to be important for the reorganization of the Golgi after it fragments during mitosis. The golgins are a family of proteins, of which the protein encoded by this gene is a member, that are localized to the Golgi. This encoded protein has been postulated to play roles in the stacking of Golgi cisternae and in vesicular transport. Several alternatively spliced transcript variants of this gene have been described, but the full-length nature of these variants has not been determined. [provided by RefSeq]

Other Designations Golgi autoantigen, golgin subfamily a, 2|Golgi matrix protein GM130|OTTHUMP00000022234|SY11 protein|golgin-95