

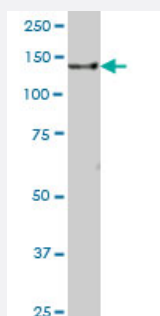
MaxPab®

GOLGA2 purified MaxPab mouse polyclonal antibody (B01P)

Catalog # H00002801-B01P

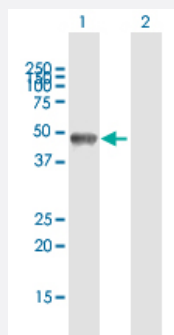
Size 50 ug

Applications



Western Blot (Tissue lysate)

GOLGA2 MaxPab polyclonal antibody. Western Blot analysis of GOLGA2 expression in human stomach.

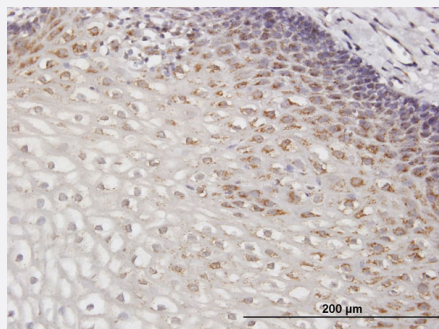


Western Blot (Transfected lysate)

Western Blot analysis of GOLGA2 expression in transfected 293T cell line ([H00002801-T01](#)) by GOLGA2 MaxPab polyclonal antibody.

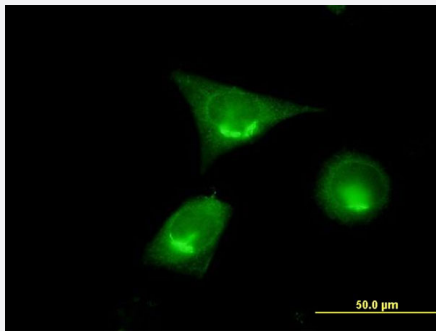
Lane 1: GOLGA2 transfected lysate(37.95 KDa).

Lane 2: Non-transfected lysate.



Immunohistochemistry (Formalin/PFA-fixed paraffin-embedded sections)

Immunoperoxidase of purified MaxPab antibody to GOLGA2 on formalin-fixed paraffin-embedded human esophagus. [antibody concentration 3 ug/ml]



Immunofluorescence

Immunofluorescence of purified MaxPab antibody to GOLGA2 on HeLa cell.
[antibody concentration 10 ug/ml]

Specification

Product Description	Mouse polyclonal antibody raised against a full-length human GOLGA2 protein.
Immunogen	GOLGA2 (AAH06381.1, 1 a.a. ~ 345 a.a) full-length human protein.
Sequence	<p>MQNDRTTISRALSQNRELKEQLAELQSGFVKLTNENMEITSALQSEQHVKRELGKKLGELQEKLSE</p> <p>ELKETVELKSQEAQSLQQQRDQYLGHLLQYVAAYQQLTSEKEVLHNQLLLQTQLVDQLQQQEAQ</p> <p>GKAVAEMARQELQETQERLEAATQQNQQLRAQLSLMAHPGEGDGLDREEEDEEEEEEEAVAV</p> <p>PQPMPSIPEDLESREAMVAFFNSAVASAEQQARLRGQLKEQSVRCRRLAHLLASQKEPEAA</p> <p>APAPGTGGDSVCGETHRALQGAMEKLQSRFMELMQEKADLKERPGRVLPVTTPLHSRSCSCFV</p> <p>RCRTPGSAQAWAATPAFLFFTGLTRMMR</p>
Host	Mouse
Reactivity	Human
Quality Control Testing	Antibody reactive against mammalian transfected lysate.
Storage Buffer	In 1x PBS, pH 7.4
Storage Instruction	Store at -20°C or lower. Aliquot to avoid repeated freezing and thawing.

Applications

● Western Blot (Tissue lysate)

GOLGA2 MaxPab polyclonal antibody. Western Blot analysis of GOLGA2 expression in human stomach.

[Protocol Download](#)

- Western Blot (Transfected lysate)

Western Blot analysis of GOLGA2 expression in transfected 293T cell line ([H00002801-T01](#)) by GOLGA2 MaxPab polyclonal antibody.

Lane 1: GOLGA2 transfected lysate(37.95 KDa).

Lane 2: Non-transfected lysate.

[Protocol Download](#)

- Immunohistochemistry (Formalin/PFA-fixed paraffin-embedded sections)

Immunoperoxidase of purified MaxPab antibody to GOLGA2 on formalin-fixed paraffin-embedded human esophagus. [antibody concentration 3 ug/ml]

[Protocol Download](#)

- Immunofluorescence

Immunofluorescence of purified MaxPab antibody to GOLGA2 on HeLa cell. [antibody concentration 10 ug/ml]

Gene Info — GOLGA2

Entrez GeneID [2801](#)

GeneBank Accession# [BC006381](#)

Protein Accession# [AAH06381.1](#)

Gene Name GOLGA2

Gene Alias GM130, MGC20672

Gene Description golgi autoantigen, golgin subfamily a, 2

Omim ID [602580](#)

Gene Ontology [Hyperlink](#)

Gene Summary

The Golgi apparatus, which participates in glycosylation and transport of proteins and lipids in the secretory pathway, consists of a series of stacked cisternae (flattened membrane sacs). Interactions between the Golgi and microtubules are thought to be important for the reorganization of the Golgi after it fragments during mitosis. The golgins are a family of proteins, of which the protein encoded by this gene is a member, that are localized to the Golgi. This encoded protein has been postulated to play roles in the stacking of Golgi cisternae and in vesicular transport. Several alternatively spliced transcript variants of this gene have been described, but the full-length nature of these variants has not been determined. [provided by RefSeq]

Other Designations Golgi autoantigen, golgin subfamily a, 2|Golgi matrix protein GM130|OTTHUMP00000022234|SY11 protein|golgin-95

Publication Reference

- [The crescent-like Golgi ribbon is shaped by the Ajuba/PRMT5/Aurora-A complex-modified HURP.](#)

Shao-Chih Chiu, Xin-Ting Yang, Tong-You Wade Wei, Yu-Ting Amber Liao, Jo-Mei Maureen Chen, Yi-Chun Kuo, Chun-Chih Jared Liu, Chiao-Yun Cheng, Yu-Ting Jenny Huang, Yun-Ru Jaoying Huang, He-Lian Joe Wu, Chang-Xin Wan, Jia-Rung Tsai, Chang-Tze Ricky Yu.

Cell Communication and Signaling 2023 Jun; 21(1):156.

Application: WB, Human, HeLa cell

- [Comprehensive BCMA Expression Profiling in Adult Normal Human Brain Suggests a Low Risk of On-target Neurotoxicity in BCMA-targeting Multiple Myeloma Therapy.](#)

Mathieu Marella, Xiang Yao, Vinicius Carreira, Marta F. Bustamante, H. Brent Clark, Carolyn C. Jackson, Enrique Zudaire, Jordan M. Schecter, Tynisha D. Glover, Jacintha Shenton, and Ingrid Cornax.

The Journal of Histochemistry and Cytochemistry: Official Journal of the Histochemistry Society 2022 Apr; 70(4):273.

Application: IF, Human, Human medulla oblongata, H-929 cells