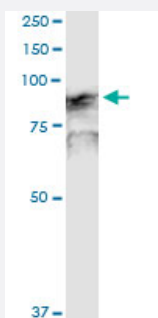


# GOLGA1 (Human) IP-WB Antibody Pair

Catalog # H00002800-PW1

Size 1 Set

## Applications



Immunoprecipitation of GOLGA1 transfected lysate using rabbit polyclonal anti-GOLGA1 and Protein A Magnetic Bead ([U0007](#)), and immunoblotted with mouse purified polyclonal anti-GOLGA1.

## Specification

### Product Description

This IP-WB antibody pair set comes with one antibody for immunoprecipitation and another to detect the precipitated protein in western blot.

### Reactivity

Human

### Quality Control Testing

Immunoprecipitation-Western Blot (IP-WB)

Immunoprecipitation of GOLGA1 transfected lysate using rabbit polyclonal anti-GOLGA1 and Protein A Magnetic Bead ([U0007](#)), and immunoblotted with mouse purified polyclonal anti-GOLGA1.

### Supplied Product

Antibody pair set content:

1. Antibody pair for IP: rabbit polyclonal anti-GOLGA1 (300 ul)
2. Antibody pair for WB: mouse purified polyclonal anti-GOLGA1 (50 ug)

### Storage Instruction

Store reagents of the antibody pair set at -20°C or lower. Please aliquot to avoid repeated freeze thaw cycle. Reagents should be returned to -20°C storage immediately after use.

## Applications

- Immunoprecipitation-Western Blot

[Protocol Download](#)

## Gene Info — GOLGA1

|                    |  |
|--------------------|--|
| Entrez GeneID      | <a href="#">2800</a>   |
| Gene Name          | GOLGA1   |
| Gene Alias         | MGC33154, golgin-97  |
| Gene Description   | golgi autoantigen, golgin subfamily a, 1   |
| Omim ID            | <a href="#">602502</a>   |
| Gene Ontology      | <a href="#">Hyperlink</a>  |
| Gene Summary       | The Golgi apparatus, which participates in glycosylation and transport of proteins and lipids in the secretory pathway, consists of a series of stacked cisternae (flattened membrane sacs). Interactions between the Golgi and microtubules are thought to be important for the reorganization of the Golgi after it fragments during mitosis. The golgins are a family of proteins, of which the protein encoded by this gene is a member, that are localized to the Golgi. This encoded protein is associated with Sjogren's syndrome. [provided by RefSeq] |
| Other Designations | OTTHUMP00000022117 OTTHUMP00000064209 gap junction protein, alpha 4, 37kD golgin 97  |

## Disease

- [Cleft Lip](#)
- [Cleft Palate](#)
- [Tobacco Use Disorder](#)