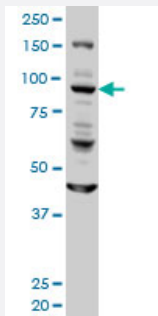


GOLGA1 monoclonal antibody (M01), clone 6G3

Catalog # H00002800-M01

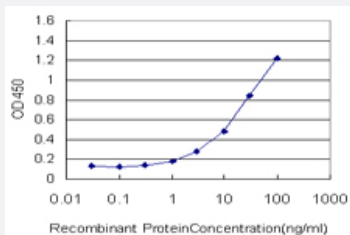
Size 100 ug

Applications



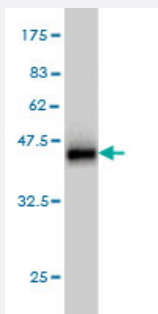
Western Blot (Cell lysate)

GOLGA1 monoclonal antibody (M01), clone 6G3 Western Blot analysis of GOLGA1 expression in HeLa (Cat # L013V1).



Sandwich ELISA (Recombinant protein)

Detection limit for recombinant GST tagged GOLGA1 is approximately 0.3ng/ml as a capture antibody.



Western Blot detection against Immunogen (36.74 KDa) .

Specification

Product Description

Mouse monoclonal antibody raised against a partial recombinant GOLGA1.

Immunogen	GOLGA1 (NP_002068, 668 a.a. ~ 767 a.a) partial recombinant protein with GST tag. MW of the GST tag alone is 26 KDa.
Sequence	EKPGPEMANMAPSVTNNTDLTDAREINFEYLYKHVVLLKFMSCRESEAFHLIKAVSVLLNFSQEEEN MLKETLEYKMSWFGSKPAPKGSIRPSISNPRIWWS
Host	Mouse
Reactivity	Human
Isotype	IgG2a Kappa
Quality Control Testing	Antibody Reactive Against Recombinant Protein. Western Blot detection against Immunogen (36.74 KDa) .
Storage Buffer	In 1x PBS, pH 7.4
Storage Instruction	Store at -20°C or lower. Aliquot to avoid repeated freezing and thawing.

Applications

- Western Blot (Cell lysate)

GOLGA1 monoclonal antibody (M01), clone 6G3 Western Blot analysis of GOLGA1 expression in HeLa (Cat # L013V1).

[Protocol Download](#)

- Western Blot (Recombinant protein)

[Protocol Download](#)

- Sandwich ELISA (Recombinant protein)

Detection limit for recombinant GST tagged GOLGA1 is approximately 0.3ng/ml as a capture antibody.

[Protocol Download](#)

- ELISA

Gene Info — GOLGA1

Entrez GeneID	2800
GeneBank Accession#	NM_002077
Protein Accession#	NP_002068

Gene Name	GOLGA1
Gene Alias	MGC33154, golgin-97
Gene Description	golgi autoantigen, golgin subfamily a, 1
Omim ID	602502
Gene Ontology	Hyperlink
Gene Summary	<p>The Golgi apparatus, which participates in glycosylation and transport of proteins and lipids in the secretory pathway, consists of a series of stacked cisternae (flattened membrane sacs). Interactions between the Golgi and microtubules are thought to be important for the reorganization of the Golgi after it fragments during mitosis. The golgins are a family of proteins, of which the protein encoded by this gene is a member, that are localized to the Golgi. This encoded protein is associated with Sjogren's syndrome. [provided by RefSeq]</p>
Other Designations	OTTHUMP00000022117 OTTHUMP00000064209 gap junction protein, alpha 4, 37kD golgin 97

Publication Reference

- [The SARS Coronavirus E Protein Interacts with PALS1 and Alters Tight Junction Formation and Epithelial Morphogenesis.](#)

Teoh KT, Siu YL, Chan WL, Schluter MA, Liu CJ, Peiris JS, Bruzzone R, Margolis B, Nal B.

Molecular Biology of the Cell 2010 Nov; 21(22):3838.

Disease

- [Cleft Lip](#)
- [Cleft Palate](#)
- [Tobacco Use Disorder](#)