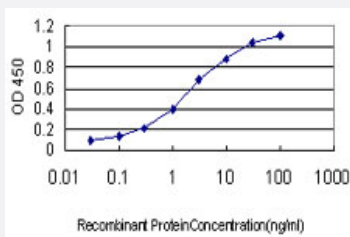


GNGT2 monoclonal antibody (M01), clone 1G11-C7

Catalog # H00002793-M01

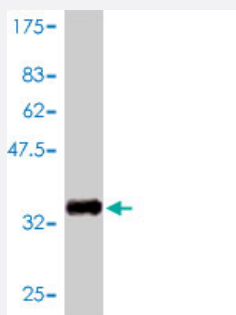
Size 100 ug

Applications



Sandwich ELISA (Recombinant protein)

Detection limit for recombinant GST tagged GNGT2 is approximately 0.03ng/ml as a capture antibody.



Western Blot detection against Immunogen (33.33 KDa) .

Specification

Product Description	Mouse monoclonal antibody raised against a full length recombinant GNGT2.
Immunogen	GNGT2 (AAH08663, 1 a.a. ~ 69 a.a) full-length recombinant protein with GST tag. MW of the GST tag alone is 26 KDa.
Sequence	MAQDLSEKDLLKMEVEQLKKEVKNTIPISKAGKEIKEYYEAQAGNDPFLKGIPEDKNPFKEKGGCLIS
Host	Mouse
Reactivity	Human

Interspecies Antigen Sequence	Mouse (83); Rat (84)
Isotype	IgG1 kappa
Quality Control Testing	Antibody Reactive Against Recombinant Protein. Western Blot detection against Immunogen (33.33 KDa) .
Storage Buffer	In 1x PBS, pH 7.4
Storage Instruction	Store at -20°C or lower. Aliquot to avoid repeated freezing and thawing.

Applications

- Western Blot (Recombinant protein)

[Protocol Download](#)

- Sandwich ELISA (Recombinant protein)

Detection limit for recombinant GST tagged GNGT2 is approximately 0.03ng/ml as a capture antibody.

[Protocol Download](#)

- ELISA

Gene Info — GNGT2

Entrez GeneID	2793
GeneBank Accession#	BC008663
Protein Accession#	AAH08663
Gene Name	GNGT2
Gene Alias	G-GAMMA-8, G-GAMMA-C, GNG8, GNG9, GNGT8
Gene Description	guanine nucleotide binding protein (G protein), gamma transducing activity polypeptide 2
Omim ID	603655
Gene Ontology	Hyperlink

Gene Summary

Phototransduction in rod and cone photoreceptors is regulated by groups of signaling proteins. The encoded protein is thought to play a crucial role in cone phototransduction. It belongs to the G protein gamma family and localized specifically in cones. There is evidence for use of multiple polyadenylation sites by this gene. [provided by RefSeq]

Other Designations

G protein cone gamma 8 subunit|gamma-T2 subunit|guanine nucleotide binding protein gamma 9|guanine nucleotide binding protein-gamma transducing activity polypeptide 2

Pathway

- [Chemokine signaling pathway](#)