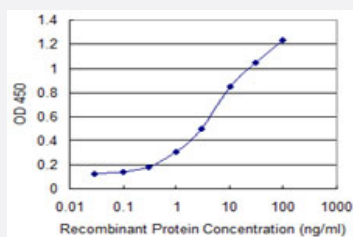


# GLE1 monoclonal antibody (M03), clone 1D8

Catalog # H00002733-M03

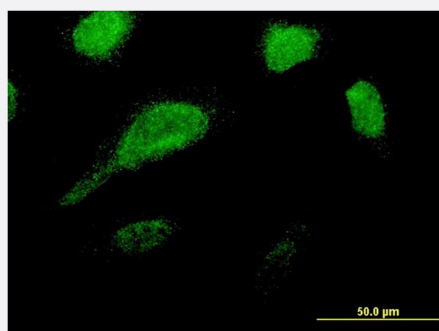
Size 100 ug

## Applications



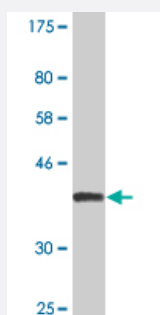
### Sandwich ELISA (Recombinant protein)

Detection limit for recombinant GST tagged GLE1 is 0.1 ng/ml as a capture antibody.



### Immunofluorescence

Immunofluorescence of monoclonal antibody to GLE1 on HeLa cell . [antibody concentration 10 ug/ml]



Western Blot detection against Immunogen (36.85 KDa) .

## Specification

### Product Description

Mouse monoclonal antibody raised against a partial recombinant GLE1.

Immunogen	GLE1 (NP_001003722.1, 140 a.a. ~ 240 a.a) partial recombinant protein with GST tag. MW of the GST tag alone is 26 KDa.
Sequence	RMKGTEGLRLWQEEQERKVQALSEMASEQLKRFDEWKELKQHKEFQDLREVMEKSSREALGH QEKLKAEHRHRRAKILNLKLREAEQQRVKQAEQERLRKEE
Host	Mouse
Reactivity	Human
Interspecies Antigen Sequence	Mouse (91); Rat (92)
Isotype	IgG1 Kappa
Quality Control Testing	Antibody Reactive Against Recombinant Protein. Western Blot detection against Immunogen (36.85 KDa) .
Storage Buffer	In 1x PBS, pH 7.4
Storage Instruction	Store at -20°C or lower. Aliquot to avoid repeated freezing and thawing.

## Applications

- Western Blot (Recombinant protein)

[Protocol Download](#)

- Sandwich ELISA (Recombinant protein)

Detection limit for recombinant GST tagged GLE1 is 0.1 ng/ml as a capture antibody.

[Protocol Download](#)

- ELISA

- Immunofluorescence

Immunofluorescence of monoclonal antibody to GLE1 on HeLa cell . [antibody concentration 10 ug/ml]

## Gene Info — GLE1

Entrez GeneID

[2733](#)

GeneBank Accession#

[NM\\_001003722](#)

Protein Accession#	<a href="#">NP_001003722.1</a>
Gene Name	GLE1
Gene Alias	GLE1L, LCCS, LCCS1, hGLE1
Gene Description	GLE1 RNA export mediator homolog (yeast)
Omim ID	<a href="#">603371</a>
Gene Ontology	<a href="#">Hyperlink</a>
Gene Summary	<p>This gene encodes a predicted 75-kDa polypeptide with high sequence and structure homology to yeast Gle1p, which is nuclear protein with a leucine-rich nuclear export sequence essential for poly(A)+RNA export. Inhibition of human GLE1L by microinjection of antibodies against GLE1L in HeLa cells resulted in inhibition of poly(A)+RNA export. Immunofluorescence studies show that GLE1L is localized at the nuclear pore complexes. This localization suggests that GLE1L may act at a terminal step in the export of mature RNA messages to the cytoplasm. Two alternatively spliced transcript variants encoding different isoforms have been found for this gene. [provided by RefSeq]</p>
Other Designations	GLE1 RNA export mediator homolog GLE1 RNA export mediator-like GLE1-like, RNA export mediator OTTHUMP00000022280 OTTHUMP00000022281

## Disease

- [Tobacco Use Disorder](#)