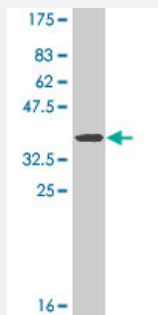


GPC3 monoclonal antibody (M01A), clone 2C12

Catalog # H00002719-M01A

Size 200 uL

Applications



Western Blot detection against Immunogen (36.63 KDa) .

Specification

Product Description	Mouse monoclonal antibody raised against a partial recombinant GPC3.
Immunogen	GPC3 (NP_004475.1, 121 a.a. ~ 220 a.a) partial recombinant protein with GST tag. MW of the GST tag alone is 26 KDa.
Sequence	HAKNYTNAMFKNNYPSLTPQAFEFVGEFFTDVSLYLGS DINVDDMVNELFDSLFPVIYTQLMNPGL PDSALDINECLRGARRDLKVFGNFPKLIMTQVS
Host	Mouse
Reactivity	Human
Interspecies Antigen Sequence	Mouse (96); Rat (96)
Isotype	IgM Kappa
Quality Control Testing	Antibody Reactive Against Recombinant Protein. Western Blot detection against Immunogen (36.63 KDa) .
Storage Buffer	In ascites fluid
Storage Instruction	Store at -20°C or lower. Aliquot to avoid repeated freezing and thawing.

Applications

- Western Blot (Recombinant protein)

[Protocol Download](#)

- ELISA

Gene Info — GPC3

Entrez GeneID [2719](#)

GeneBank Accession# [NM_004484](#)

Protein Accession# [NP_004475.1](#)

Gene Name GPC3

Gene Alias DGSX, OCI-5, SDYS, SGB, SGBS, SGBS1

Gene Description glypican 3

Omim ID [194070 300037 312870](#)

Gene Ontology [Hyperlink](#)

Gene Summary

Cell surface heparan sulfate proteoglycans are composed of a membrane-associated protein core substituted with a variable number of heparan sulfate chains. Members of the glypican-related integral membrane proteoglycan family (GRIPS) contain a core protein anchored to the cytoplasmic membrane via a glycosyl phosphatidylinositol linkage. These proteins may play a role in the control of cell division and growth regulation. The protein encoded by this gene can bind to and inhibit the dipeptidyl peptidase activity of CD26, and it can induce apoptosis in certain cell types. Deletion mutations in this gene are associated with Simpson-Golabi-Behmel syndrome, also known as Simpson dysmorphia syndrome. Alternative splicing results in multiple transcript variants. [provided by RefSeq]

Other Designations OTTHUMP00000024058|OTTHUMP00000062492|glypican proteoglycan 3