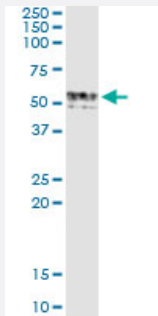


GIF (Human) IP-WB Antibody Pair

Catalog # H00002694-PW1

Size 1 Set

Applications



Immunoprecipitation of GIF transfected lysate using mouse monoclonal anti-GIF and Protein A Magnetic Bead ([U0007](#)), and immunoblotted with rabbit polyclonal anti-GIF.

Specification

Product Description	This IP-WB antibody pair set comes with one antibody for immunoprecipitation and another to detect the precipitated protein in western blot.
Reactivity	Human
Quality Control Testing	Immunoprecipitation-Western Blot (IP-WB) Immunoprecipitation of GIF transfected lysate using mouse monoclonal anti-GIF and Protein A Magnetic Bead (U0007), and immunoblotted with rabbit polyclonal anti-GIF.
Supplied Product	Antibody pair set content: 1. Antibody pair for IP: mouse monoclonal anti-GIF (300 ug) 2. Antibody pair for WB: rabbit polyclonal anti-GIF (50 ul)
Storage Instruction	Store reagents of the antibody pair set at -20°C or lower. Please aliquot to avoid repeated freeze thaw cycle. Reagents should be returned to -20°C storage immediately after use.

Applications

- Immunoprecipitation-Western Blot

[Protocol Download](#)

Gene Info — GIF

Entrez GeneID	2694
Gene Name	GIF
Gene Alias	IF, IFMH, INF, TCN3
Gene Description	gastric intrinsic factor (vitamin B synthesis)
Omim ID	261000 609342
Gene Ontology	Hyperlink
Gene Summary	<p>This gene is a member of the cobalamin transport protein family. It encodes a glycoprotein secreted by parietal cells of the gastric mucosa and is required for adequate absorption of vitamin B12. Vitamin B12 is necessary for erythrocyte maturation and mutations in this gene may lead to congenital pernicious anemia. [provided by RefSeq]</p>
Other Designations	-

Disease

- [Colorectal Neoplasms](#)
- [Genetic Predisposition to Disease](#)
- [Microsatellite Instability](#)