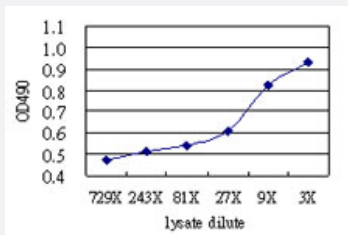


GGT1 (Human) Matched Antibody Pair

Catalog # H00002678-AP51

Size 1 Set

Applications



Sandwich ELISA detection sensitivity ranging from approximately 27x to 3x dilution of the GGT1 293T overexpression lysate (non-denatured).

Specification

Product Description	This antibody pair set comes with a matched antibody pair to detect and quantify the protein level of human GGT1.
Reactivity	Human
Interspecies Antigen Sequence	Mouse (78%); Rat (79%)
Quality Control Testing	Standard curve using GGT1 293T overexpression lysate (non-denatured) as an analyte. Sandwich ELISA detection sensitivity ranging from approximately 27x to 3x dilution of the GGT1 293 T overexpression lysate (non-denatured).
Supplied Product	Antibody pair set content: 1. Capture antibody: mouse monoclonal anti-GGT1, IgG2a Kappa (100 ug) 2. Detection antibody: rabbit purified polyclonal anti-GGT1 (50 ug) *Reagents are sufficient for at least 3-5 x 96 well plates using recommended protocols.
Storage Instruction	Store reagents of the antibody pair set at -20°C or lower. Please aliquot to avoid repeated freeze thaw cycle. Reagents should be returned to -20°C storage immediately after use.

Applications

- ELISA Pair (Transfected lysate)

[Protocol Download](#)

Gene Info — GGT1

Entrez GeneID [2678](#)

Gene Name GGT1

Gene Alias CD224, D22S672, D22S732, GGT, GTG, MGC96892, MGC96904, MGC96963

Gene Description gamma-glutamyltransferase 1

Omim ID [231950](#)

Gene Ontology [Hyperlink](#)

Gene Summary The enzyme encoded by this gene catalyzes the transfer of the glutamyl moiety of glutathione to a variety of amino acids and dipeptide acceptors. The enzyme is composed of a heavy chain and a light chain, which are derived from a single precursor protein, and is present in tissues involved in absorption and secretion. This enzyme is a member of the gamma-glutamyltransferase protein family, of which many members have not yet been fully characterized and some of which may represent pseudogenes. This gene is classified as type I gamma-glutamyltransferase. Multiple alternatively spliced variants, encoding the same protein, have been identified. [provided by RefSeq]

Other Designations OTTHUMP00000028921|OTTHUMP00000159078|gamma-glutamyl transpeptidase|glutamyl transpeptidase

Pathway

- [Arachidonic acid metabolism](#)
- [Cyanoamino acid metabolism](#)
- [Glutathione metabolism](#)
- [Metabolic pathways](#)
- [Selenoamino acid metabolism](#)
- [Taurine and hypotaurine metabolism](#)

Disease

- [Alzheimer disease](#)
- [Arsenic Poisoning](#)
- [Cognition](#)
- [Disease Progression](#)
- [DNA Damage](#)
- [Fatty Liver](#)
- [Genetic Predisposition to Disease](#)
- [Metabolic Syndrome X](#)
- [Pancreatic Neoplasms](#)
- [Sleep Apnea](#)