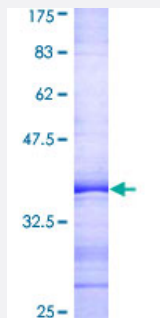


GEM (Human) Recombinant Protein (Q01)

Catalog # H00002669-Q01

Size 25 ug, 10 ug

Applications



Specification

Product Description	Human GEM partial ORF (AAH22010, 1 a.a. - 100 a.a.) recombinant protein with GST-tag at N-terminal.
Sequence	MTLNNVTMRQGTVMQPQQQRWSIPADGRHLMVQKEPHQYSHRNRHSATPEDHCRRSWSSDSTDSVISSESGNTYYRVVLLIGEQQGVGKSTLANIFAGVHD
Host	Wheat Germ (in vitro)
Theoretical MW (kDa)	36.63
Interspecies Antigen Sequence	Mouse (90); Rat (88)
Preparation Method	in vitro wheat germ expression system
Purification	Glutathione Sepharose 4 Fast Flow
Quality Control Testing	12.5% SDS-PAGE Stained with Coomassie Blue.
Storage Buffer	50 mM Tris-HCl, 10 mM reduced Glutathione, pH=8.0 in the elution buffer.
Storage Instruction	Store at -80°C. Aliquot to avoid repeated freezing and thawing.
Note	Best use within three months from the date of receipt of this protein.

Applications

- Enzyme-linked Immunoabsorbent Assay
- Western Blot (Recombinant protein)
- Antibody Production
- Protein Array

Gene Info — GEM

Entrez GeneID [2669](#)

GeneBank Accession# [BC022010](#)

Protein Accession# [AAH22010](#)

Gene Name GEM

Gene Alias KIR, MGC26294

Gene Description GTP binding protein overexpressed in skeletal muscle

Omim ID [600164](#)

Gene Ontology [Hyperlink](#)

Gene Summary The protein encoded by this gene belongs to the RAD/GEM family of GTP-binding proteins. It is associated with the inner face of the plasma membrane and could play a role as a regulatory protein in receptor-mediated signal transduction. Alternative splicing occurs at this locus and two transcript variants encoding the same protein have been identified. [provided by RefSeq]

Other Designations GTP-binding mitogen-induced T-cell protein|GTP-binding protein overexpressed in skeletal muscle|kinase-inducible Ras-like protein