

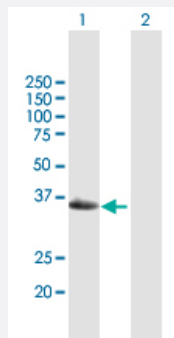
MaxPab®

GEM purified MaxPab mouse polyclonal antibody (B01P)

Catalog # H00002669-B01P

Size 50 ug

Applications



Western Blot (Transfected lysate)

Western Blot analysis of GEM expression in transfected 293T cell line ([H00002669-T01](#)) by GEM MaxPab polyclonal antibody.

Lane 1: GEM transfected lysate(32.56 KDa).

Lane 2: Non-transfected lysate.

Specification

Product Description

Mouse polyclonal antibody raised against a full-length human GEM protein.

Immunogen

GEM (ABM84902.1, 1 a.a. ~ 296 a.a) full-length human protein.

Sequence

MTLNNVTMRQGTVMQPQQQRWSIPADGRHLMVQKEPHQYSHRNRHSATPEDHCRRSWSSDS
TDSVISSESGNTYYRVVLIGEQQVGKSTLANIFAGVHDSMDSDCEVLGEDTYERTLMVDGESATIIL
LDMWENKGENEWLHDHCMQVGDAYLIVYSITDRASFEKASELRIQLRRARQTEDIPIILVGNKSDLV
RCREVSVSEGRACAVVFDCKFIETSAAVQHNVKELFEGIVRQVRLRRDSKEKNERRLAYQKRKE
SMPRKARRFWGKIVAKNNKNMAFKLKSXCNDLSVL

Host

Mouse

Reactivity

Human

Interspecies Antigen Sequence

Mouse (95); Rat (95)

Quality Control Testing

Antibody reactive against mammalian transfected lysate.

Storage Buffer

In 1x PBS, pH 7.4

Storage Instruction

Store at -20°C or lower. Aliquot to avoid repeated freezing and thawing.

Applications

- Western Blot (Transfected lysate)

Western Blot analysis of GEM expression in transfected 293T cell line ([H00002669-T01](#)) by GEM MaxPab polyclonal antibody.

Lane 1: GEM transfected lysate(32.56 KDa).

Lane 2: Non-transfected lysate.

[Protocol Download](#)

Gene Info — GEM

Entrez GeneID	2669
---------------	----------------------

GeneBank Accession#	DQ893976.2
---------------------	----------------------------

Protein Accession#	ABM84902.1
--------------------	----------------------------

Gene Name	GEM
-----------	-----

Gene Alias	KIR, MGC26294
------------	---------------

Gene Description	GTP binding protein overexpressed in skeletal muscle
------------------	--

Omim ID	600164
---------	------------------------

Gene Ontology	Hyperlink
---------------	---------------------------

Gene Summary	The protein encoded by this gene belongs to the RAD/GEM family of GTP-binding proteins. It is associated with the inner face of the plasma membrane and could play a role as a regulatory protein in receptor-mediated signal transduction. Alternative splicing occurs at this locus and two transcript variants encoding the same protein have been identified. [provided by RefSeq]
--------------	--

Other Designations	GTP-binding mitogen-induced T-cell protein GTP-binding protein overexpressed in skeletal muscle kinase-inducible Ras-like protein
--------------------	---