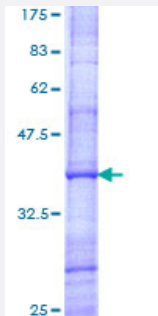


GDF10 (Human) Recombinant Protein (Q01)

Catalog # H00002662-Q01

Size 10 ug, 25 ug

Applications



Specification

Product Description	Human GDF10 partial ORF (NP_004953, 379 a.a. - 478 a.a.) recombinant protein with GST-tag at N-terminal.
Sequence	RYLKVDFADIGWNEWIISPKSFDAYYCAGACEFPMPKIVRPSNHATIQSIVRAVGIIIPGIPEPCCVPD KMNSLGVLFLDENRNVVLKVYPNMSVDTCACR
Host	Wheat Germ (in vitro)
Theoretical MW (kDa)	36.74
Interspecies Antigen Sequence	Mouse (97); Rat (98)
Preparation Method	in vitro wheat germ expression system
Purification	Glutathione Sepharose 4 Fast Flow
Quality Control Testing	12.5% SDS-PAGE Stained with Coomassie Blue.
Storage Buffer	50 mM Tris-HCl, 10 mM reduced Glutathione, pH=8.0 in the elution buffer.
Storage Instruction	Store at -80°C. Aliquot to avoid repeated freezing and thawing.
Note	Best use within three months from the date of receipt of this protein.

Applications

- Enzyme-linked Immunoabsorbent Assay
- Western Blot (Recombinant protein)
- Antibody Production
- Protein Array

Gene Info — GDF10

Entrez GeneID [2662](#)

GeneBank Accession# [NM_004962](#)

Protein Accession# [NP_004953](#)

Gene Name GDF10

Gene Alias BMP-3b, BMP3B

Gene Description growth differentiation factor 10

Omim ID [601361](#)

Gene Ontology [Hyperlink](#)

Gene Summary The protein encoded by this gene is a member of the bone morphogenetic protein (BMP) family and the TGF-beta superfamily. This group of proteins is characterized by a polybasic proteolytic processing site which is cleaved to produce a mature protein containing seven conserved cysteine residues. The members of this family are regulators of cell growth and differentiation in both embryonic and adult tissues. Studies in mice suggest that the protein encoded by this gene plays a role in skeletal morphogenesis. [provided by RefSeq]

Other Designations OTTHUMP00000019534|bone morphogenetic protein 3B

Disease

- [Alzheimer Disease](#)
- [Genetic Predisposition to Disease](#)
- [Obesity](#)

- [Ovarian Failure](#)
- [Polycystic Ovary Syndrome](#)
- [Puberty](#)
- [Thrombophilia](#)
- [Tobacco Use Disorder](#)