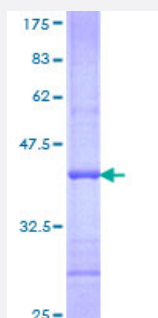


NR6A1 (Human) Recombinant Protein (Q01)

Catalog # H00002649-Q01

Size 10 ug, 25 ug

Applications



Specification

Product Description	Human NR6A1 partial ORF (NP_001480, 366 a.a. - 474 a.a.) recombinant protein with GST-tag at N-terminal.
Sequence	RLIYLYHKFHLKVSNEEYACMKAINFLNQDIRGLTSASQLEQLNKRYWYICQDFTEYKYTHQPNRF PDLMMCLPEIRYAGKMNVPLEQLPLLFKVVHLSCKTSVGK
Host	Wheat Germ (in vitro)
Theoretical MW (kDa)	37.73
Interspecies Antigen Sequence	Mouse (98)
Preparation Method	in vitro wheat germ expression system
Purification	Glutathione Sepharose 4 Fast Flow
Quality Control Testing	12.5% SDS-PAGE Stained with Coomassie Blue.
Storage Buffer	50 mM Tris-HCl, 10 mM reduced Glutathione, pH=8.0 in the elution buffer.
Storage Instruction	Store at -80°C. Aliquot to avoid repeated freezing and thawing.
Note	Best use within three months from the date of receipt of this protein.

Applications

- Enzyme-linked Immunoabsorbent Assay
- Western Blot (Recombinant protein)
- Antibody Production
- Protein Array

Gene Info — NR6A1

Entrez GeneID [2649](#)

GeneBank Accession# [NM_001489](#)

Protein Accession# [NP_001480](#)

Gene Name NR6A1

Gene Alias GCNF, GCNF1, NR61, RTR

Gene Description nuclear receptor subfamily 6, group A, member 1

Omim ID [602778](#)

Gene Ontology [Hyperlink](#)

Gene Summary This gene encodes an orphan nuclear receptor which is a member of the nuclear hormone receptor family. Its expression pattern suggests that it may be involved in neurogenesis and germ cell development. The protein can homodimerize and bind DNA, but in vivo targets have not been identified. The gene expresses at least alternatively spliced transcript variants. [provided by RefSeq]

Other Designations germ cell nuclear factor|retinoic acid receptor-related testis-associated receptor

Disease

- [Cleft Lip](#)
- [Cleft Palate](#)
- [Tobacco Use Disorder](#)