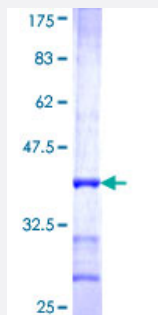


# BLOC1S1 (Human) Recombinant Protein (Q01)

Catalog # H00002647-Q01

Size 25 ug, 10 ug

## Applications



## Specification

<b>Product Description</b>	Human BLOC1S1 partial ORF ( NP_001478, 31 a.a. - 124 a.a.) recombinant protein with GST-tag at N-terminal.
<b>Sequence</b>	ATCLTEALVDHLNVGVAQAYMNQRKLDHEVKTLQVQAAQFAKQTGGWIGMVENFNQALKEIGDV ENWARSIELDMRTIATALEYVYKGQLQSAP
<b>Host</b>	Wheat Germ (in vitro)
<b>Theoretical MW (kDa)</b>	36.08
<b>Interspecies Antigen Sequence</b>	Mouse (100); Rat (100)
<b>Preparation Method</b>	<a href="#">in vitro wheat germ expression system</a>
<b>Purification</b>	Glutathione Sepharose 4 Fast Flow
<b>Quality Control Testing</b>	12.5% SDS-PAGE Stained with Coomassie Blue.
<b>Storage Buffer</b>	50 mM Tris-HCl, 10 mM reduced Glutathione, pH=8.0 in the elution buffer.
<b>Storage Instruction</b>	Store at -80°C. Aliquot to avoid repeated freezing and thawing.
<b>Note</b>	Best use within three months from the date of receipt of this protein.

## Applications

- Enzyme-linked Immunoabsorbent Assay
- Western Blot (Recombinant protein)
- Antibody Production
- Protein Array

## Gene Info — BLOC1S1

Entrez GeneID	<a href="#">2647</a>
GeneBank Accession#	<a href="#">NM_001487</a>
Protein Accession#	<a href="#">NP_001478</a>
Gene Name	BLOC1S1
Gene Alias	BLOS1, FLJ39337, FLJ97089, GCN5L1, MGC87455, MICoA, RT14
Gene Description	biogenesis of lysosomal organelles complex-1, subunit 1
Omim ID	<a href="#">601444</a>
Gene Ontology	<a href="#">Hyperlink</a>
Gene Summary	BLOC1S1 is a component of the ubiquitously expressed BLOC1 multisubunit protein complex. BLOC1 is required for normal biogenesis of specialized organelles of the endosomal-lysosomal system, such as melanosomes and platelet dense granules (Starcevic and Dell'Angelica, 2004 [PubMed 15102850]).[supplied by OMIM]
Other Designations	BLOC subunit 1 BLOC-1 subunit 1 GCN5 (general control of amino-acid synthesis, yeast, homolog)-like 1 GCN5 general control of amino-acid synthesis 5-like 1 MTA1-interacting coactivator biogenesis of lysosome-related organelles complex-1, subunit 1