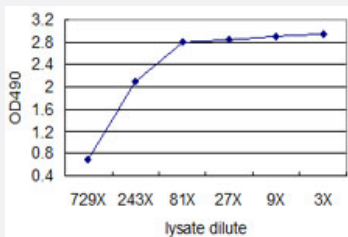


GCG (Human) Matched Antibody Pair

Catalog # H00002641-AP41

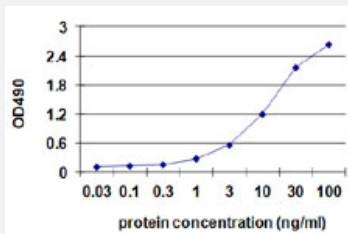
Size 1 Set

Applications



ELISA Pair (Transfected lysate)

Standard curve using 293T overexpression lysate (non-denatured) as an analyte. Sandwich ELISA detection sensitivity ranging from approximately 729x to 3x dilution of the 293T overexpression lysate (non-denatured).



Sandwich ELISA detection sensitivity ranging from 0.1 ng/ml to 100 ng/ml.

Specification

Product Description	This antibody pair set comes with a matched antibody pair to detect and quantify the protein level of human GCG.
Reactivity	Human
Quality Control Testing	Standard curve using recombinant protein (H00002641-P01) as an analyte. Sandwich ELISA detection sensitivity ranging from 0.1 ng/ml to 100 ng/ml.
Supplied Product	Antibody pair set content: 1. Capture antibody: mouse monoclonal anti-GCG, IgG1 Kappa (100 ug) 2. Detection antibody: biotinylated mouse monoclonal anti-GCG, IgG1 Kappa (50 ug) *Reagents are sufficient for at least 3-5 x 96 well plates using recommended protocols.

Storage Instruction

Store reagents of the antibody pair set at -20°C or lower. Please aliquot to avoid repeated freeze thaw cycle. Reagents should be returned to -20°C storage immediately after use.

Applications

- ELISA Pair (Recombinant protein)

[Protocol Download](#)

- ELISA Pair (Transfected lysate)

Standard curve using 293T overexpression lysate (non-denatured) as an analyte. Sandwich ELISA detection sensitivity ranging from approximately 729x to 3x dilution of the 293T overexpression lysate (non-denatured).

[Protocol Download](#)

Gene Info — GCG

Entrez GeneID [2641](#)

Gene Name GCG

Gene Alias GLP1, GLP2, GRPP

Gene Description glucagon

Omim ID [138030](#)

Gene Ontology [Hyperlink](#)

Gene Summary The protein encoded by this gene is actually a preproprotein that is cleaved into four distinct mature peptides. One of these, glucagon, is a pancreatic hormone that counteracts the glucose-lowering action of insulin by stimulating glycogenolysis and gluconeogenesis. Glucagon is a ligand for a specific G-protein linked receptor whose signalling pathway controls cell proliferation. Two of the other peptides are secreted from gut endocrine cells and promote nutrient absorption through distinct mechanisms. Finally, the fourth peptide is similar to glicentin, an active enteroglucagon. [provided by RefSeq]

Other Designations glicentin-related polypeptide|glucagon-like peptide 1|glucagon-like peptide 2

Pathway

- [Neuroactive ligand-receptor interaction](#)

Disease

- [Atherosclerosis](#)
- [Calcinosis](#)
- [Cardiovascular Diseases](#)
- [Coronary Artery Disease](#)
- [Diabetes Mellitus](#)
- [Drug Toxicity](#)
- [Edema](#)
- [Obesity](#)