

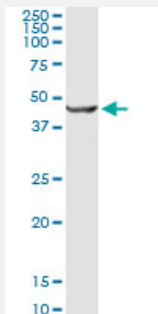
MaxPab®

# GCDH purified MaxPab rabbit polyclonal antibody (D01P)

Catalog # H00002639-D01P

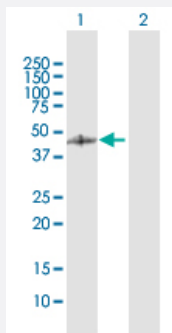
Size 100 ug

## Applications



### Western Blot (Tissue lysate)

GCDH MaxPab rabbit polyclonal antibody. Western Blot analysis of GCDH expression in human kidney.

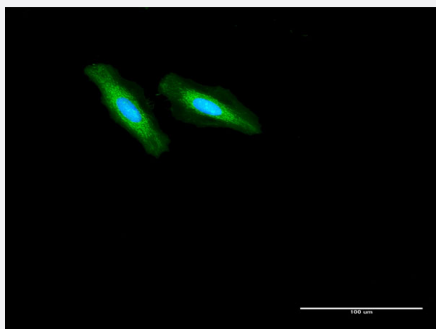


### Western Blot (Transfected lysate)

Western Blot analysis of GCDH expression in transfected 293T cell line ([H00002639-T02](#)) by GCDH MaxPab polyclonal antibody.

Lane 1: GCDH transfected lysate(48.10 KDa).

Lane 2: Non-transfected lysate.



### Immunofluorescence

Immunofluorescence of purified MaxPab antibody to GCDH on HeLa cell. [antibody concentration 30 ug/ml]

## Specification

### Product Description

Rabbit polyclonal antibody raised against a full-length human GCDH protein.

Immunogen	GCDH (NP_000150.1, 1 a.a. ~ 438 a.a) full-length human protein.
Sequence	MALRGVSVRLLSRGPGLHVLRTWVSSAAQTEKGGRTQSQLAKSSRPEFDWQDPLVLEEQLTTD EILIRDTFRTYCQERLMPRILLANRNEVFHREIISEMGELGVLGPTIKGYGCAGVSSVAYGLLARELE RVDSGYRSAMSVQSSLVMHPYAYGSEEQRQKYLPLAKGELLGCFGLTEPNSGSDPSSMETRA HYNSSNKSYSYLTNGTKTWITNSPMADLFVVWARCEDGCIRGFLLEKGMGRGLSAPRIQKGFSLRASA TGMIIIMDGVEVPEENVLPGASSLGGPFGCLNNARYGIAWGVLGASEFCLHTARQYALDRMQFGV PLARNQLIQKKLADMLTEITLGLHACLQLGRLKDQDKAAPEMVSLKRNNGKALDIARQARDML GGNGISDEYHVRHAMNLEAVNTYEGTHDIHALILGRAITGIQAFTASK
Host	Rabbit
Reactivity	Human
Quality Control Testing	Antibody reactive against mammalian transfected lysate.
Storage Buffer	In 1x PBS, pH 7.4
Storage Instruction	Store at -20°C or lower. Aliquot to avoid repeated freezing and thawing.

## Applications

- Western Blot (Tissue lysate)

GCDH MaxPab rabbit polyclonal antibody. Western Blot analysis of GCDH expression in human kidney.

[Protocol Download](#)

- Western Blot (Transfected lysate)

Western Blot analysis of GCDH expression in transfected 293T cell line ([H00002639-T02](#)) by GCDH MaxPab polyclonal antibody.

Lane 1: GCDH transfected lysate(48.10 KDa).

Lane 2: Non-transfected lysate.

[Protocol Download](#)

- Immunofluorescence

Immunofluorescence of [purified](#) MaxPab antibody to GCDH on HeLa cell. [antibody concentration 30 ug/ml]

## Gene Info — GCDH

Entrez GeneID

[2639](#)

GeneBank Accession#

[NM\\_000159.2](#)

Protein Accession#	<a href="#">NP_000150.1</a>
Gene Name	GCDH
Gene Alias	ACAD5, GCD
Gene Description	glutaryl-Coenzyme A dehydrogenase
Omim ID	<a href="#">231670 608801</a>
Gene Ontology	<a href="#">Hyperlink</a>
Gene Summary	<p>The protein encoded by this gene belongs to the acyl-CoA dehydrogenase family. It catalyzes the oxidative decarboxylation of glutaryl-CoA to crotonyl-CoA and CO(2) in the degradative pathway of L-lysine, L-hydroxylysine, and L-tryptophan metabolism. It uses electron transfer flavoprotein as its electron acceptor. The enzyme exists in the mitochondrial matrix as a homotetramer of 45-kD subunits. Alternatively spliced transcript variants encoding different isoforms have been identified. [ provided by RefSeq</p>
Other Designations	glutaryl-CoA dehydrogenase, mitochondrial

## Pathway

- [Benzoate degradation via CoA ligation](#)
- [Fatty acid metabolism](#)
- [Lysine degradation](#)
- [Metabolic pathways](#)
- [Tryptophan metabolism](#)

## Disease

- [Cardiovascular Diseases](#)
- [Diabetes Mellitus](#)
- [Edema](#)