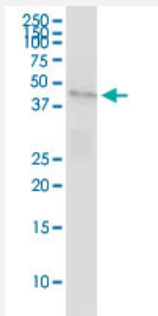


GABPB1 (Human) IP-WB Antibody Pair

Catalog # H00002553-PW2

Size 1 Set

Applications



Immunoprecipitation of GABPB1 transfected lysate using rabbit polyclonal anti-GABPB1 and Protein A Magnetic Bead ([U0007](#)), and immunoblotted with mouse purified polyclonal anti-GABPB1.

Specification

| | |
|--------------------------------|---|
| Product Description | This IP-WB antibody pair set comes with one antibody for immunoprecipitation and another to detect the precipitated protein in western blot. |
| Reactivity | Human |
| Quality Control Testing | Immunoprecipitation-Western Blot (IP-WB) Immunoprecipitation of GABPB1 transfected lysate using rabbit polyclonal anti-GABPB1 and Protein A Magnetic Bead (U0007), and immunoblotted with mouse purified polyclonal anti-GABPB1. |
| Supplied Product | Antibody pair set content: 1. Antibody pair for IP: rabbit polyclonal anti-GABPB1 (300 ul) 2. Antibody pair for WB: mouse purified polyclonal anti-GABPB1 (50 ug) |
| Storage Instruction | Store reagents of the antibody pair set at -20°C or lower. Please aliquot to avoid repeated freeze thaw cycle. Reagents should be returned to -20°C storage immediately after use. |

Applications

- Immunoprecipitation-Western Blot

[Protocol Download](#)

Gene Info — GABPB1

Entrez GeneID [2553](#)**Gene Name** GABPB1**Gene Alias** BABPB2, E4TF1, E4TF1-47, E4TF1-53, E4TF1B, GABPB, GABPB2, NRF2B1, NRF2B2**Gene Description** GA binding protein transcription factor, beta subunit 1**Omim ID** [600610](#)**Gene Ontology** [Hyperlink](#)

Gene Summary This gene encodes the GA-binding protein transcription factor, beta subunit. This protein forms a tetrameric complex with the alpha subunit, and stimulates transcription of target genes. The encoded protein may be involved in activation of cytochrome oxidase expression and nuclear control of mitochondrial function. The crystal structure of a similar protein in mouse has been resolved as a ternary protein complex. Multiple transcript variants encoding distinct isoforms have been identified for this gene. [provided by RefSeq]

Other Designations -