

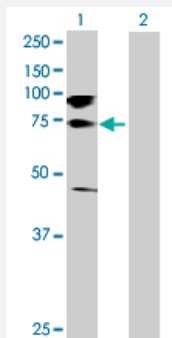
MaxPab®

## GAB1 purified MaxPab rabbit polyclonal antibody (D01P)

Catalog # H00002549-D01P

Size 100 ug

### Applications

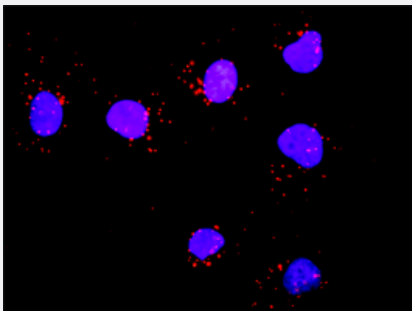


#### Western Blot (Transfected lysate)

Western Blot analysis of GAB1 expression in transfected 293T cell line ([H00002549-T01](#)) by GAB1 MaxPab polyclonal antibody.

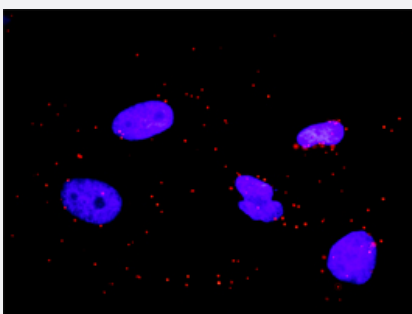
Lane 1: GAB1 transfected lysate(80.00 KDa).

Lane 2: Non-transfected lysate.



#### In situ Proximity Ligation Assay (Cell)

Proximity Ligation Analysis of protein-protein interactions between GAB1 and SOS1. Mahlavu cells were stained with anti-GAB1 rabbit purified polyclonal 1:1200 and anti-SOS1 mouse monoclonal antibody 1:50. Each red dot represents the detection of protein-protein interaction complex, and nuclei were counterstained with DAPI (blue).



#### In situ Proximity Ligation Assay (Cell)

Proximity Ligation Analysis of protein-protein interactions between GAB1 and CRKL. HeLa cells were stained with anti-GAB1 rabbit purified polyclonal 1:1200 and anti-CRKL mouse monoclonal antibody 1:50. Each red dot represents the detection of protein-protein interaction complex, and nuclei were counterstained with DAPI (blue).

### Specification

#### Product Description

Rabbit polyclonal antibody raised against a full-length human GAB1 protein.

<b>Immunogen</b>	GAB1 (NP_997006.1, 1 a.a. ~ 724 a.a) full-length human protein.
<b>Sequence</b>	MSGGEVVCSGWLRLKSPPEKKLKRYAWKRRWFVLRSGRLTGDPDVLEYYKNDHAKKPIRIIDLNL CQQVDAGLTFNKKEFENSYIFDINTIDRIFYLVADSEEMNKWVRCICDGFNPTEEDPVKPPGSS LQAPADLPLAINTAPPSTQADSSSATLPPPYQLINVPPHLETGLIQEDPQDYLLINCQSKKPEPTRT HADSAKSTSSETDCNDNVPSHKNPASSQSKHGMNGFFQQQMIDSPPSRAPASVDSLYNLP RSYSHDVLPKVSPSSTEADGELYVFNTPSGTSSVETQMRHVSISYDIPPTPGNTYQIPRTFPEGTL GQTSKLDTIPDIPPRPPKPHPAHDRSPVETCSIPRTASDTSYCIPTAGMSPSRNTISTVDLNLK LRKDASSQDCYDIPRAFPSDRSSSLEGFHNHFKVKNVLTGSGVSSEELDENYVPMNPNSPPRQH SSSFTEPIQEANYVPMTPGTDFSSFGMQVPPPAHMGFRSSPKTPRRPVVADCEPPPVDNRN LKPDRKGQSPKILRLKPHGLERTDSQTIGDFATRRKVKPAPLEIKPLPEWEELQAPVRSPITRSFA RDSRRFPMSPRPDSVHSTSSSDSHDSEENYVPMNPNLSSDPNLFSGNSLDGGSSPMIKPKG DKQVEYLDLDLSGKSTPPRKQKSSGSGSSVADERVDYVVVDQKTLALKSTREAWTDGRQST ESETPAKSVK
<b>Host</b>	Rabbit
<b>Reactivity</b>	Human
<b>Interspecies Antigen Sequence</b>	Mouse (86); Rat (85)
<b>Quality Control Testing</b>	Antibody reactive against mammalian transfected lysate.
<b>Storage Buffer</b>	In 1x PBS, pH 7.4
<b>Storage Instruction</b>	Store at -20°C or lower. Aliquot to avoid repeated freezing and thawing.

## Applications

- Western Blot (Transfected lysate)

Western Blot analysis of GAB1 expression in transfected 293T cell line ([H00002549-T01](#)) by GAB1 MaxPab polyclonal antibody.

Lane 1: GAB1 transfected lysate(80.00 KDa).

Lane 2: Non-transfected lysate.

[Protocol Download](#)

- In situ* Proximity Ligation Assay (Cell)

Proximity Ligation Analysis of protein-protein interactions between GAB1 and SOS1. Mahlavu cells were stained with anti-GAB1 rabbit purified polyclonal 1:1200 and anti-SOS1 mouse monoclonal antibody 1:50. Each red dot represents the detection of protein-protein interaction complex, and nuclei were counterstained with DAPI (blue).

- In situ* Proximity Ligation Assay (Cell)

Proximity Ligation Analysis of protein-protein interactions between GAB1 and CRKL. HeLa cells were stained with anti-GAB1 rabbit purified polyclonal 1:1200 and anti-CRKL mouse monoclonal antibody 1:50. Each red dot represents the detection of protein-protein interaction complex, and nuclei were counterstained with DAPI (blue).

## Gene Info — GAB1

**Entrez GeneID** [2549](#)**GeneBank Accession#** [NM\\_207123](#)**Protein Accession#** [NP\\_997006.1](#)**Gene Name** GAB1**Gene Alias** -**Gene Description** GRB2-associated binding protein 1**Omim ID** [604439](#)**Gene Ontology** [Hyperlink](#)

**Gene Summary** The protein encoded by this gene is a member of the IRS1-like multisubstrate docking protein family. It is an important mediator of branching tubulogenesis and plays a central role in cellular growth response, transformation and apoptosis. Two transcript variants encoding different isoforms have been found for this gene. [provided by RefSeq]

**Other Designations** -

## Pathway

- [ErbB signaling pathway](#)
- [Neurotrophin signaling pathway](#)
- [Renal cell carcinoma](#)

## Disease

- [Atrophy](#)
- [Cardiovascular Diseases](#)
- [Diabetes Mellitus](#)
- [Edema](#)
- [Gastritis](#)

- [Genetic Predisposition to Disease](#)
- [Helicobacter Infections](#)
- [Metaplasia](#)
- [Narcolepsy](#)
- [Stomach Neoplasms](#)