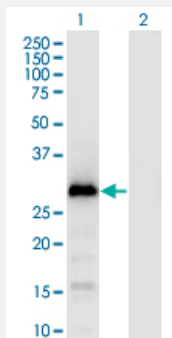


GAGE1 monoclonal antibody (M04), clone 4G6

Catalog # H00002543-M04

Size 100 ug

Applications

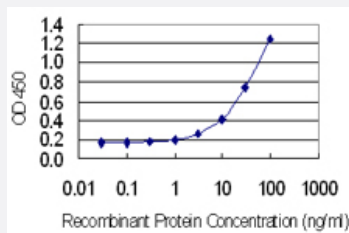


Western Blot (Transfected lysate)

Western Blot analysis of GAGE1 expression in transfected 293T cell line by GAGE1 monoclonal antibody (M04), clone 4G6.

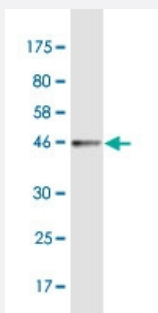
Lane 1: GAGE1 transfected lysate (Predicted MW: 15.6 kDa).

Lane 2: Non-transfected lysate.



Sandwich ELISA (Recombinant protein)

Detection limit for recombinant GST tagged GAGE1 is 0.3 ng/ml as a capture antibody.



Western Blot detection against Immunogen (42 kDa) .

Specification

Product Description

Mouse monoclonal antibody raised against a full-length recombinant GAGE1.

| | |
|-------------------------|---|
| Immunogen | GAGE1 (NP_001459.2, 1 a.a. ~ 139 a.a) full-length recombinant protein with GST tag. MW of the GST tag alone is 26 KDa. |
| Sequence | MSWRGRSTYYWPRPRRYVQPPEMIGPMRPEQFSDEVEPATPEEGEPATQRQDPAAQEGEDE GASAGQGPKPEADSQEQGHPQTGCECEDGPDGQEMDPPNPPEEVKTPEEEMRSHYVAQTGILW LLMNNCFLNLSRPKP |
| Host | Mouse |
| Reactivity | Human |
| Isotype | IgG1 Kappa |
| Quality Control Testing | Antibody Reactive Against Recombinant Protein. Western Blot detection against Immunogen (42 KDa) . |
| Storage Buffer | In 1x PBS, pH 7.4 |
| Storage Instruction | Store at -20°C or lower. Aliquot to avoid repeated freezing and thawing. |

Applications

- Western Blot (Transfected lysate)

Western Blot analysis of GAGE1 expression in transfected 293T cell line by GAGE1 monoclonal antibody (M04), clone 4G6.

Lane 1: GAGE1 transfected lysate (Predicted MW: 15.6 KDa).

Lane 2: Non-transfected lysate.

[Protocol Download](#)

- Western Blot (Recombinant protein)

[Protocol Download](#)

- Sandwich ELISA (Recombinant protein)

Detection limit for recombinant GST tagged GAGE1 is 0.3 ng/ml as a capture antibody.

[Protocol Download](#)

- ELISA

Gene Info — GAGE1

Entrez GeneID [2543](#)

| | |
|---------------------|--|
| GeneBank Accession# | NM_001468.3 |
| Protein Accession# | NP_001459.2 |
| Gene Name | GAGE1 |
| Gene Alias | MGC33825 |
| Gene Description | G antigen 1 |
| Omim ID | 300594 |
| Gene Ontology | Hyperlink |
| Gene Summary | <p>This gene belongs to a family of genes that are expressed in a variety of tumors but not in normal tissues, except for the testis. The sequences of the family members are highly related but differ by scattered nucleotide substitutions. The GAGE1 cDNA contains a 143-bp insertion, located in the coding sequence near the termination codon, that is absent from the other cDNAs. The antigenic peptide YRPRPRRY, which is also encoded by several other family members, is recognized by autologous cytolytic T lymphocytes. Nothing is presently known about the function of this protein. An alternatively spliced transcript variant has been found for this gene. [provided by RefSeq]</p> |
| Other Designations | MZ2-F antigen OTTHUMP00000025848 |