

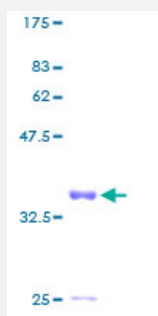
Full-Length

G1P3 (Human) Recombinant Protein (P01)

Catalog # H00002537-P01

Size 25 ug, 10 ug

Applications



Specification

Product Description	Human G1P3 full-length ORF (AAH11601, 1 a.a. - 130 a.a.) recombinant protein with GST-tag at N-terminal.
Sequence	MRQKAVSLFLCYLLLFTCSGVEAGKKKCSSESSDSGSFWKALTFMAVGGGLAVAGLPALGFTG AGIAANSVAASLMSWSAILNGGGVPAGGLVATLQSLGAGGSCVVIGNIGALMGYATHKYLDSEED EE
Host	Wheat Germ (in vitro)
Theoretical MW (kDa)	40.04
Preparation Method	in vitro wheat germ expression system
Purification	Glutathione Sepharose 4 Fast Flow
Quality Control Testing	12.5% SDS-PAGE Stained with Coomassie Blue.
Storage Buffer	50 mM Tris-HCl, 10 mM reduced Glutathione, pH=8.0 in the elution buffer.
Storage Instruction	Store at -80°C. Aliquot to avoid repeated freezing and thawing.
Note	Best use within three months from the date of receipt of this protein.

Applications

- Enzyme-linked Immunoabsorbent Assay
- Western Blot (Recombinant protein)
- Antibody Production
- Protein Array

Gene Info — IFI6

Entrez GeneID	2537
GeneBank Accession#	BC011601
Protein Accession#	AAH11601
Gene Name	IFI6
Gene Alias	6-16, FAM14C, G1P3, IFI-6-16, IFI616
Gene Description	interferon, alpha-inducible protein 6
Omim ID	147572
Gene Ontology	Hyperlink
Gene Summary	This gene was first identified as one of the many genes induced by interferon. The encoded protein may play a critical role in the regulation of apoptosis. A minisatellite that consists of 26 repeats of a 12 nucleotide repeating element resembling the mammalian splice donor consensus sequence begins near the end of the second exon. Alternatively spliced transcript variants that encode different isoforms by using the two downstream repeat units as splice donor sites have been described. [provided by RefSeq]
Other Designations	OTTHUMP00000003605 OTTHUMP00000003606 OTTHUMP00000003607 interferon, alpha-inducible protein clone IFI-6-16

Disease

- [Genetic Predisposition to Disease](#)

- [Ovarian Neoplasms](#)