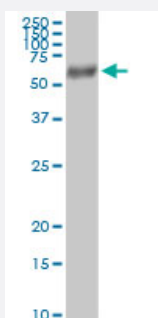


FUCA1 (Human) IP-WB Antibody Pair

Catalog # H00002517-PW1

Size 1 Set

Applications



Immunoprecipitation of FUCA1 transfected lysate using rabbit polyclonal anti-FUCA1 and Protein A Magnetic Bead ([U0007](#)), and immunoblotted with mouse purified polyclonal anti-FUCA1.

Specification

Product Description	This IP-WB antibody pair set comes with one antibody for immunoprecipitation and another to detect the precipitated protein in western blot.
Reactivity	Human
Quality Control Testing	Immunoprecipitation-Western Blot (IP-WB) Immunoprecipitation of FUCA1 transfected lysate using rabbit polyclonal anti-FUCA1 and Protein A Magnetic Bead (U0007), and immunoblotted with mouse purified polyclonal anti-FUCA1.
Supplied Product	Antibody pair set content: 1. Antibody pair for IP: rabbit polyclonal anti-FUCA1 (300 ul) 2. Antibody pair for WB: mouse purified polyclonal anti-FUCA1 (50 ug)
Storage Instruction	Store reagents of the antibody pair set at -20°C or lower. Please aliquot to avoid repeated freeze thaw cycle. Reagents should be returned to -20°C storage immediately after use.

Applications

- Immunoprecipitation-Western Blot

[Protocol Download](#)

Gene Info — FUCA1

Entrez GeneID	2517
Gene Name	FUCA1
Gene Alias	FUCA
Gene Description	fucosidase, alpha-L- 1, tissue
Omim ID	230000
Gene Ontology	Hyperlink
Gene Summary	Alpha-L-fucosidase (EC 3.2.1.51) is a lysosomal enzyme involved in the degradation of fucose-containing glycoproteins and glycolipids (Occhiodoro et al., 1989 [PubMed 2803312]). At least 2 separate polymorphic alpha-L-fucosidases are recognized in man: that in tissues, FUCA1, which is deficient in fucosidosis (MIM 230000), and that in plasma, FUCA2 (MIM 136820).[supplied by OMIM]
Other Designations	Nbla10230/alpha-L-fucosidase OTTHUMP00000003009 alpha-L-fucosidase fucosidase, alpha-L-1, tissue

Pathway

- [Lysosome](#)
- [Other glycan degradation](#)

Disease

- [Genetic Predisposition to Disease](#)
- [Neoplasms](#)
- [Ovarian cancer](#)
- [Ovarian Neoplasms](#)