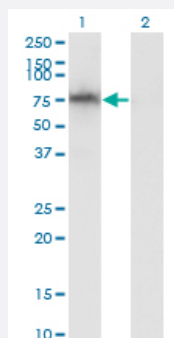


ADAM2 monoclonal antibody (M02), clone 1B8

Catalog # H00002515-M02

Size 100 ug

Applications

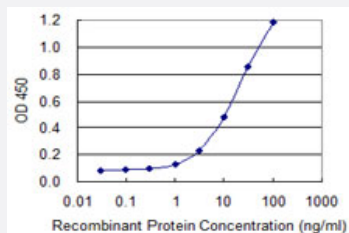


Western Blot (Transfected lysate)

Western Blot analysis of ADAM2 expression in transfected 293T cell line by ADAM2 monoclonal antibody (M02), clone 1B8.

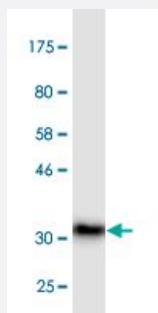
Lane 1: ADAM2 transfected lysate (Predicted MW: 64.8 kDa).

Lane 2: Non-transfected lysate.



Sandwich ELISA (Recombinant protein)

Detection limit for recombinant GST tagged ADAM2 is 1 ng/ml as a capture antibody.



Western Blot detection against Immunogen (36.74 kDa) .

Specification

Product Description

Mouse monoclonal antibody raised against a partial recombinant ADAM2.

Immunogen	ADAM2 (NP_001455, 376 a.a. ~ 475 a.a) partial recombinant protein with GST tag. MW of the GST tag alone is 26 KDa.
Sequence	RLDPFFKQQAVCGNAKLEAGEEEDCGTEQDCALIGETCCDIATCRFKAGSNCAEGPCCENCLF MSKERMCRRPSFEEDCLPEYCNCGSSASCPENHYVQTGH
Host	Mouse
Reactivity	Human
Interspecies Antigen Sequence	Mouse (46)
Isotype	IgG2a Kappa
Quality Control Testing	Antibody Reactive Against Recombinant Protein. Western Blot detection against Immunogen (36.74 KDa) .
Storage Buffer	In 1x PBS, pH 7.4
Storage Instruction	Store at -20°C or lower. Aliquot to avoid repeated freezing and thawing.

Applications

- Western Blot (Transfected lysate)

Western Blot analysis of ADAM2 expression in transfected 293T cell line by ADAM2 monoclonal antibody (M02), clone 1B8.

Lane 1: ADAM2 transfected lysate (Predicted MW: 64.8 KDa).

Lane 2: Non-transfected lysate.

[Protocol Download](#)

- Western Blot (Recombinant protein)

[Protocol Download](#)

- Sandwich ELISA (Recombinant protein)

Detection limit for recombinant GST tagged ADAM2 is 1 ng/ml as a capture antibody.

[Protocol Download](#)

- ELISA

Gene Info — ADAM2

Entrez GeneID	2515
GeneBank Accession#	NM_001464
Protein Accession#	NP_001455
Gene Name	ADAM2
Gene Alias	CRYN1, CRYN2, FTNB, PH-30b, PH30
Gene Description	ADAM metallopeptidase domain 2
Omim ID	601533
Gene Ontology	Hyperlink
Gene Summary	<p>This gene encodes a member of the ADAM (a disintegrin and metalloprotease domain) family. Members of this family are membrane-anchored proteins structurally related to snake venom disintegrins, and have been implicated in a variety of biological processes involving cell-cell and cell-matrix interactions, including fertilization, muscle development, and neurogenesis. This member is a subunit of an integral sperm membrane glycoprotein called fertilin, which plays an important role in sperm-egg interactions. [provided by RefSeq]</p>
Other Designations	fertilin beta