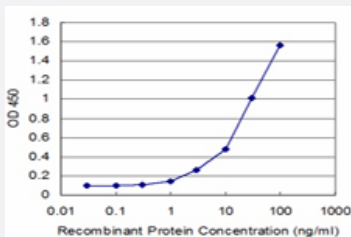


FTL monoclonal antibody, clone 1C2

Catalog # H00002512-M07

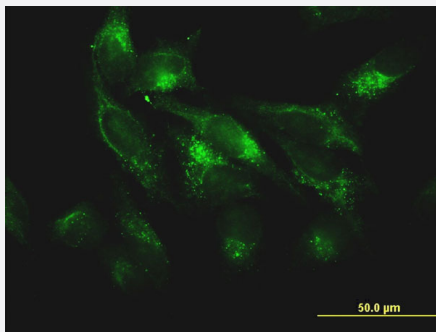
Size 100 ug

Applications



Sandwich ELISA (Recombinant protein)

Detection limit for recombinant GST tagged FTL is approximately 1ng/ml as a capture antibody.



Immunofluorescence

Immunofluorescence of monoclonal antibody to FTL on HeLa cell . [antibody concentration 15 ug/ml]

Specification

Product Description	Mouse monoclonal antibody raised against a full length native FTL.
Immunogen	Native purified human FTL.
Host	Mouse
Reactivity	Human
Form	Liquid
Isotype	IgG1, kappa
Quality Control Testing	Antibody Reactive Against Native Protein

Recommend Usage	The optimal working dilution should be determined by the end user.
Storage Buffer	In PBS, pH 7.4
Storage Instruction	Store at -20°C or lower. Aliquot to avoid repeated freezing and thawing.

Applications

- Sandwich ELISA (Recombinant protein)

Detection limit for recombinant GST tagged FTL is approximately 1ng/ml as a capture antibody.

[Protocol Download](#)

- ELISA

- Immunofluorescence

Immunofluorescence of monoclonal antibody to FTL on HeLa cell . [antibody concentration 15 ug/ml]

Gene Info — FTL

Entrez GeneID [2512](#)

Gene Name FTL

Gene Alias MGC71996

Gene Description ferritin, light polypeptide

Omim ID [134790](#) [600886](#) [606159](#)

Gene Ontology [Hyperlink](#)

Gene Summary This gene encodes the light subunit of the ferritin protein. Ferritin is the major intracellular iron storage protein in prokaryotes and eukaryotes. It is composed of 24 subunits of the heavy and light ferritin chains. Variation in ferritin subunit composition may affect the rates of iron uptake and release in different tissues. A major function of ferritin is the storage of iron in a soluble and nontoxic state. Defects in this light chain ferritin gene are associated with several neurodegenerative diseases and hyperferritinemia-cataract syndrome. This gene has multiple pseudogenes. [provided by RefSeq]

Other Designations L apoferritin|ferritin L subunit|ferritin L-chain|ferritin light chain|ferritin light polypeptide-like 3

Disease

- [Alzheimer disease](#)
- [Cognition](#)
- [Genetic Predisposition to Disease](#)
- [Huntington disease](#)
- [Lung Neoplasms](#)
- [Parkinson disease](#)