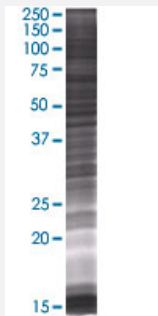


# CENPI 293T Cell Transient Overexpression Lysate(Denatured)

Catalog # H00002491-T01

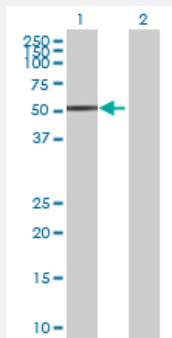
Size 100 uL

## Applications



### SDS-PAGE Gel

CENPI transfected lysate.



### Western Blot

Lane 1: CENPI transfected lysate ( 57.53 KDa)

Lane 2: Non-transfected lysate.

## Specification

Transfected Cell Line	293T
Plasmid	pCMV-CENPI full-length
Host	Human
Theoretical MW (kDa)	57.53
Interspecies Antigen Sequence	Mouse (74); Rat (75)

**Quality Control Testing**

Transient overexpression cell lysate was tested with Anti-CENPI antibody ([H00002491-B01](#)) by Western Blots.  
SDS-PAGE Gel  
CENPI transfected lysate.  
Western Blot  
Lane 1: CENPI transfected lysate ( 57.53 KDa)  
Lane 2: Non-transfected lysate.

**Storage Buffer**

1X Sample Buffer (50 mM Tris-HCl, 2% SDS, 10% glycerol, 300 mM 2-mercaptoethanol, 0.01% Bromophenol blue)

**Storage Instruction**

Store at -80°C. Aliquot to avoid repeated freezing and thawing.

## Applications

- Western Blot

## Gene Info — CENPI

**Entrez GeneID**[2491](#)**GeneBank Accession#**[BC012462.2](#)**Protein Accession#**[AAH12462.1](#)**Gene Name**

CENPI

**Gene Alias**

CENP-I, FSHPRH1, LRPR1, Mis6

**Gene Description**

centromere protein I

**Omim ID**[300065](#)**Gene Ontology**[Hyperlink](#)**Gene Summary**

The product of this gene is involved in the response of gonadal tissues to follicle-stimulating hormone. This gene is also a potential candidate for human X-linked disorders of gonadal development and gametogenesis. [provided by RefSeq]

**Other Designations**

FSH primary response 1|OTTHUMP00000023671|follicle-stimulating hormone primary response protein|leucine-rich primary response protein 1