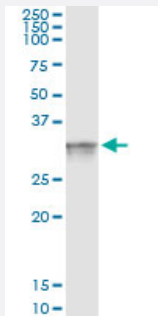


# FRG1 (Human) IP-WB Antibody Pair

Catalog # H00002483-PW2

Size 1 Set

## Applications



Immunoprecipitation of FRG1 transfected lysate using mouse monoclonal anti-FRG1 and Protein A Magnetic Bead ([U0007](#)), and immunoblotted with rabbit polyclonal anti-FRG1.

## Specification

<b>Product Description</b>	This IP-WB antibody pair set comes with one antibody for immunoprecipitation and another to detect the precipitated protein in western blot.
<b>Reactivity</b>	Human
<b>Interspecies Antigen Sequence</b>	Mouse (97%); Rat (95%)
<b>Quality Control Testing</b>	Immunoprecipitation-Western Blot (IP-WB) Immunoprecipitation of FRG1 transfected lysate using mouse monoclonal anti-FRG1 and Protein A Magnetic Bead ( <a href="#">U0007</a> ), and immunoblotted with rabbit polyclonal anti-FRG1.
<b>Supplied Product</b>	Antibody pair set content: 1. Antibody pair for IP: mouse monoclonal anti-FRG1 (300 ug) 2. Antibody pair for WB: rabbit polyclonal anti-FRG1 (50 ul)
<b>Storage Instruction</b>	Store reagents of the antibody pair set at -20°C or lower. Please aliquot to avoid repeated freeze thaw cycle. Reagents should be returned to -20°C storage immediately after use.

## Applications

- Immunoprecipitation-Western Blot

[Protocol Download](#)

## Gene Info — FRG1

Entrez GeneID	<a href="#">2483</a>
---------------	----------------------

Gene Name	FRG1
-----------	------

Gene Alias	FRG1A, FSG1
------------	-------------

Gene Description	FSHD region gene 1
------------------	--------------------

Omim ID	<a href="#">601278</a>
---------	------------------------

Gene Ontology	<a href="#">Hyperlink</a>
---------------	---------------------------

Gene Summary	This gene maps to a location 100 kb centromeric of the repeat units on chromosome 4q35 which are deleted in facioscapulohumeral muscular dystrophy (FSHD). It is evolutionarily conserved and has related sequences on multiple human chromosomes but DNA sequence analysis did not reveal any homology to known genes. In vivo studies demonstrate the encoded protein is localized to the nucleolus. [provided by RefSeq]
--------------	---

Other Designations	facioscapulohumeral muscular dystrophy region gene-1
--------------------	--