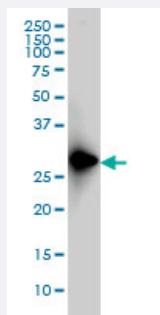


FRG1 monoclonal antibody (M01), clone 4A5

Catalog # H00002483-M01

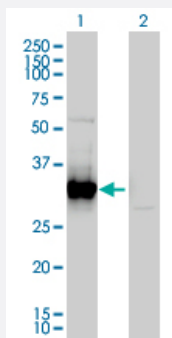
Size 100 ug

Applications



Western Blot (Cell lysate)

FRG1 monoclonal antibody (M01), clone 4A5 Western Blot analysis of FRG1 expression in HeLa S3 NE (Cat # L013V3).

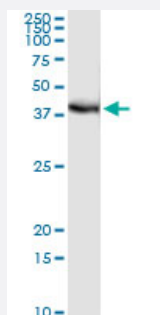


Western Blot (Transfected lysate)

Western Blot analysis of FRG1 expression in transfected 293T cell line by FRG1 monoclonal antibody (M01), clone 4A5.

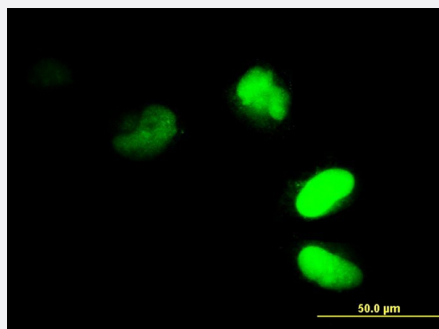
Lane 1: FRG1 transfected lysate(29 KDa).

Lane 2: Non-transfected lysate.



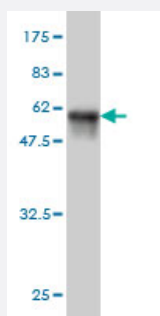
Immunoprecipitation

Immunoprecipitation of FRG1 transfected lysate using anti-FRG1 monoclonal antibody and Protein A Magnetic Bead, and immunoblotted with FRG1 MaxPab rabbit polyclonal antibody.



Immunofluorescence

Immunofluorescence of monoclonal antibody to FRG1 on HeLa cell. [antibody concentration 35 ug/ml]



Western Blot detection against Immunogen (54.12 KDa) .

Specification

| | |
|--------------------------------------|---|
| Product Description | Mouse monoclonal antibody raised against a full length recombinant FRG1. |
| Immunogen | FRG1 (AAH53997, 1 a.a. ~ 258 a.a) full-length recombinant protein with GST tag. MW of the GST tag alone is 26 KDa. |
| Sequence | MAEYSYVKSTKLVLKGTKSKKKKSKDKKRKREEDEETQLDIVGMWTVTNFGEISGTIAIEMDK GTYIHALDNLGFTLGAPHKEVDEGPSPPEQFTAVKLSDSRALKSGYGKYLGINSDGLVVGRSDAI GPREQWEPVFQNGKMALLASNSCFIRCNEAGDIEAKSKTAGEEEMIKIRSCAERETKKKDDIPEE DKGNVKQCEINYVKKFQSFQDHKLKISKEDSKILKKARKDGLHETLLDRRAKLKADRYCK |
| Host | Mouse |
| Reactivity | Human |
| Interspecies Antigen Sequence | Mouse (97); Rat (95) |
| Isotype | IgG2a Kappa |
| Quality Control Testing | Antibody Reactive Against Recombinant Protein. Western Blot detection against Immunogen (54.12 KDa) . |
| Storage Buffer | In 1x PBS, pH 7.4 |
| Storage Instruction | Store at -20°C or lower. Aliquot to avoid repeated freezing and thawing. |

Applications

- Western Blot (Cell lysate)

FRG1 monoclonal antibody (M01), clone 4A5 Western Blot analysis of FRG1 expression in Hela S3 NE (Cat # L013V3).

[Protocol Download](#)

- Western Blot (Transfected lysate)

Western Blot analysis of FRG1 expression in transfected 293T cell line by FRG1 monoclonal antibody (M01), clone 4A5.

Lane 1: FRG1 transfected lysate(29 KDa).

Lane 2: Non-transfected lysate.

[Protocol Download](#)

- Western Blot (Recombinant protein)

[Protocol Download](#)

- Immunoprecipitation

Immunoprecipitation of FRG1 transfected lysate using anti-FRG1 monoclonal antibody and Protein A Magnetic Bead, and immunoblotted with FRG1 MaxPab rabbit polyclonal antibody.

[Protocol Download](#)

- ELISA

- Immunofluorescence

Immunofluorescence of monoclonal antibody to FRG1 on HeLa cell. [antibody concentration 35 ug/ml]

Gene Info — FRG1

Entrez GeneID [2483](#)

GeneBank Accession# [BC053997](#)

Protein Accession# [AAH53997](#)

Gene Name FRG1

Gene Alias FRG1A, FSG1

Gene Description FSHD region gene 1

Omim ID [601278](#)

Gene Ontology [Hyperlink](#)

Gene Summary This gene maps to a location 100 kb centromeric of the repeat units on chromosome 4q35 which are deleted in facioscapulohumeral muscular dystrophy (FSHD). It is evolutionarily conserved and has related sequences on multiple human chromosomes but DNA sequence analysis did not reveal any homology to known genes. In vivo studies demonstrate the encoded protein is localized to the nucleolus. [provided by RefSeq]

Other Designations facioscapulohumeral muscular dystrophy region gene-1

Publication Reference

- [RNA Interference Improves Myopathic Phenotypes in Mice Over-expressing FSHD Region Gene 1 \(FRG1\).](#)

Wallace LM, Garwick-Coppens SE, Tupler R, Harper SQ.

Mol Ther 2011 Jul; 19:2048.

Application: WB-Tr, WB-Ti, Human, Mouse, HEK293 cells, Muscles