

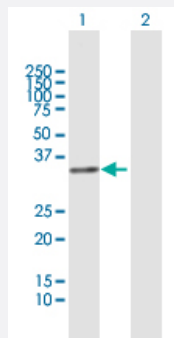
MaxPab®

FRG1 purified MaxPab mouse polyclonal antibody (B01P)

Catalog # H00002483-B01P

Size 50 ug

Applications

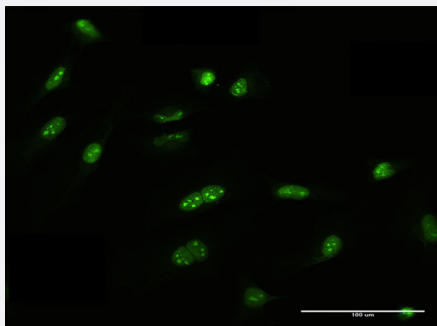


Western Blot (Transfected lysate)

Western Blot analysis of FRG1 expression in transfected 293T cell line ([H00002483-T01](#)) by FRG1 MaxPab polyclonal antibody.

Lane 1: FRG1 transfected lysate(28.38 KDa).

Lane 2: Non-transfected lysate.



Immunofluorescence

Immunofluorescence of purified MaxPab antibody to FRG1 on HeLa cell. [antibody concentration 10 ug/ml]

Specification

Product Description

Mouse polyclonal antibody raised against a full-length human FRG1 protein.

Immunogen

FRG1 (NP_004468.1, 1 a.a. ~ 258 a.a) full-length human protein.

Sequence

MAEYSYVKSTKLVLKGTCTKSKKKKSKDKKRKREDEETQLDVGWWTVTNFGESGTIAIEMDK
GTIHALDNLGFTLGAPHKVDEGSPPEQFTAVKLSDSRALKSGYGKYLGINSDGLVVGRSDAI
GPREQWEPVFQNGKMALLASNSCFIRCNEAGDIEAKSKTAGEEEMIKIRSCAERETKKKDDIPEE
DKGNVKQCEINYKKFQSFQDHLKISKEDSKILKKARKDGLHETLLDRRAKLKADRYCK

Host

Mouse

Reactivity

Human

Interspecies Antigen Sequence	Mouse (97); Rat (95)
Quality Control Testing	Antibody reactive against mammalian transfected lysate.
Storage Buffer	In 1x PBS, pH 7.4
Storage Instruction	Store at -20°C or lower. Aliquot to avoid repeated freezing and thawing.

Applications

- Western Blot (Transfected lysate)

Western Blot analysis of FRG1 expression in transfected 293T cell line ([H00002483-T01](#)) by FRG1 MaxPab polyclonal antibody.

Lane 1: FRG1 transfected lysate(28.38 KDa).

Lane 2: Non-transfected lysate.

[Protocol Download](#)

- Immunofluorescence

Immunofluorescence of purified MaxPab antibody to FRG1 on HeLa cell. [antibody concentration 10 ug/ml]

Gene Info — FRG1

Entrez GeneID	2483
GeneBank Accession#	NM_004477.2
Protein Accession#	NP_004468.1
Gene Name	FRG1
Gene Alias	FRG1A, FSG1
Gene Description	FSHD region gene 1
Omim ID	601278
Gene Ontology	Hyperlink
Gene Summary	This gene maps to a location 100 kb centromeric of the repeat units on chromosome 4q35 which are deleted in facioscapulohumeral muscular dystrophy (FSHD). It is evolutionarily conserved and has related sequences on multiple human chromosomes but DNA sequence analysis did not reveal any homology to known genes. In vivo studies demonstrate the encoded protein is localized to the nucleolus. [provided by RefSeq]

Other Designationsfacioscapulohumeral muscular dystrophy region gene-1
