

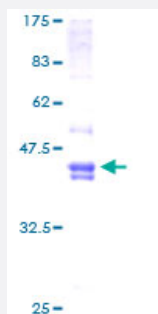
Full-Length

FOSL2 (Human) Recombinant Protein (P01)

Catalog # H00002355-P01

Size 25 ug, 10 ug

Applications



Specification

Product Description	Human FOSL2 full-length ORF (AAH08899, 1 a.a. - 122 a.a.) recombinant protein with GST-tag at N-terminal.
Sequence	MSVGLDLPQMLPGSPSPSLKEAFAEDGEAGEGGGRPSLEWRLQQLLPQHPLSLSWLLTSPQGT GPFLPSVVICHLLDQVLSLLHSPVPTPVHSSGPGSKQAVNSWPELSLWLVAHAPFLVVC
Host	Wheat Germ (in vitro)
Theoretical MW (kDa)	39.16
Interspecies Antigen Sequence	Mouse (38); Rat (40)
Preparation Method	in vitro wheat germ expression system
Purification	Glutathione Sepharose 4 Fast Flow
Quality Control Testing	12.5% SDS-PAGE Stained with Coomassie Blue.
Storage Buffer	50 mM Tris-HCl, 10 mM reduced Glutathione, pH=8.0 in the elution buffer.
Storage Instruction	Store at -80°C. Aliquot to avoid repeated freezing and thawing.
Note	Best use within three months from the date of receipt of this protein.

Applications

- Enzyme-linked Immunoabsorbent Assay
- Western Blot (Recombinant protein)
- Antibody Production
- Protein Array

Gene Info — FOSL2

Entrez GeneID	2355
GeneBank Accession#	BC008899
Protein Accession#	AAH08899
Gene Name	FOSL2
Gene Alias	FLJ23306, FRA2
Gene Description	FOS-like antigen 2
Omim ID	601575
Gene Ontology	Hyperlink
Gene Summary	The Fos gene family consists of 4 members: FOS, FOSB, FOSL1, and FOSL2. These genes encode leucine zipper proteins that can dimerize with proteins of the JUN family, thereby forming the transcription factor complex AP-1. As such, the FOS proteins have been implicated as regulators of cell proliferation, differentiation, and transformation. [provided by RefSeq]
Other Designations	-

Disease

- [Disease Models](#)
- [Genetic Predisposition to Disease](#)