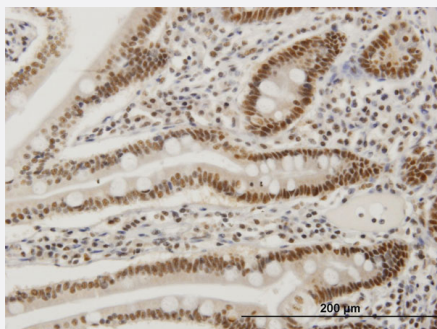


FOSL2 monoclonal antibody (M03), clone 2B2

Catalog # H00002355-M03

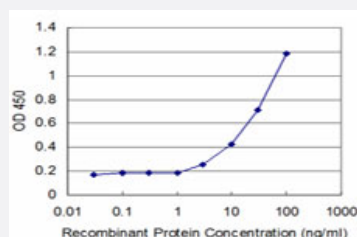
Size 100 ug

Applications



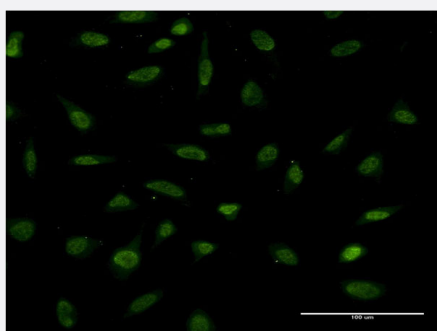
Immunohistochemistry (Formalin/PFA-fixed paraffin-embedded sections)

Immunoperoxidase of monoclonal antibody to FOSL2 on formalin-fixed paraffin-embedded human small Intestine. [antibody concentration 3 ug/ml]



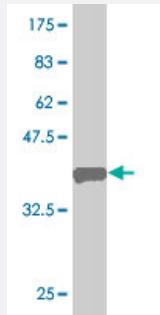
Sandwich ELISA (Recombinant protein)

Detection limit for recombinant GST tagged FOSL2 is approximately 3ng/ml as a capture antibody.



Immunofluorescence

Immunofluorescence of monoclonal antibody to FOSL2 on HeLa cell . [antibody concentration 10 ug/ml]



Western Blot detection against Immunogen (35.64 KDa) .

Specification

Product Description	Mouse monoclonal antibody raised against a partial recombinant FOSL2.
Immunogen	FOSL2 (NP_005244, 207 a.a. ~ 296 a.a) partial recombinant protein with GST tag. MW of the GST tag alone is 26 KDa.
Sequence	QPMRSGGGSVGAVVVKQEPLEEDSPSSSSAGLDKAQRSVIKPISIAGGFYGEEPLHTPIVVTSTP AVTPGTSNLVFTYPSVLEQESPASP
Host	Mouse
Reactivity	Human
Interspecies Antigen Sequence	Mouse (84); Rat (86)
Isotype	IgG2a Kappa
Quality Control Testing	Antibody Reactive Against Recombinant Protein. Western Blot detection against Immunogen (35.64 KDa) .
Storage Buffer	In 1x PBS, pH 7.4
Storage Instruction	Store at -20°C or lower. Aliquot to avoid repeated freezing and thawing.

Applications

- Western Blot (Recombinant protein)

[Protocol Download](#)

- Immunohistochemistry (Formalin/PFA-fixed paraffin-embedded sections)

Immunoperoxidase of monoclonal antibody to FOSL2 on formalin-fixed paraffin-embedded human small intestine. [antibody concentration 3 ug/ml]

[Protocol Download](#)

- Sandwich ELISA (Recombinant protein)

Detection limit for recombinant GST tagged FOSL2 is approximately 3ng/ml as a capture antibody.

[Protocol Download](#)

- ELISA

- Immunofluorescence

Immunofluorescence of monoclonal antibody to FOSL2 on HeLa cell . [antibody concentration 10 ug/ml]

Gene Info — FOSL2

Entrez GeneID [2355](#)

GeneBank Accession# [NM_005253](#)

Protein Accession# [NP_005244](#)

Gene Name FOSL2

Gene Alias FLJ23306, FRA2

Gene Description FOS-like antigen 2

Omim ID [601575](#)

Gene Ontology [Hyperlink](#)

Gene Summary The Fos gene family consists of 4 members: FOS, FOSB, FOSL1, and FOSL2. These genes encode leucine zipper proteins that can dimerize with proteins of the JUN family, thereby forming the transcription factor complex AP-1. As such, the FOS proteins have been implicated as regulators of cell proliferation, differentiation, and transformation. [provided by RefSeq]

Other Designations -

Disease

- [Disease Models](#)

- [Genetic Predisposition to Disease](#)