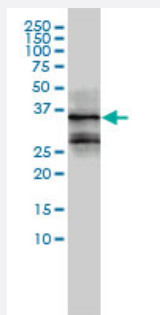


# FOSL2 monoclonal antibody (M01), clone 2B4-1C2

Catalog # H00002355-M01

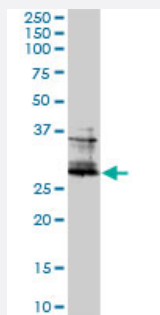
Size 100 ug

## Applications



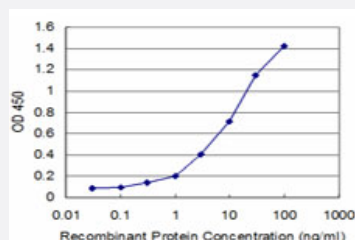
### Western Blot (Cell lysate)

FOSL2 monoclonal antibody (M01), clone 2B4-1C2 Western Blot analysis of FOSL2 expression in MCF-7 ( Cat # L046V1 ).



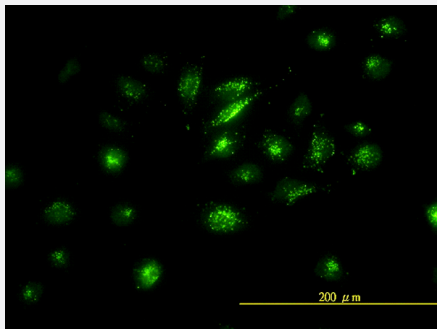
### Western Blot (Cell lysate)

FOSL2 monoclonal antibody (M01), clone 2B4-1C2. Western Blot analysis of FOSL2 expression in Jurkat ( Cat # L017V1 ).



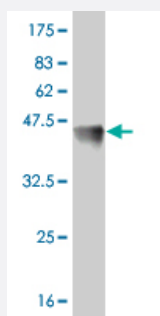
### Sandwich ELISA (Recombinant protein)

Detection limit for recombinant GST tagged FOSL2 is approximately 0.3ng/ml as a capture antibody.



## Immunofluorescence

Immunofluorescence of monoclonal antibody to FOSL2 on HeLa cell. [antibody concentration 20 ug/ml]



Western Blot detection against Immunogen (39.16 KDa) .

## Specification

<b>Product Description</b>	Mouse monoclonal antibody raised against a full length recombinant FOSL2.
<b>Immunogen</b>	FOSL2 (AAH08899, 1 a.a. ~ 122 a.a) full-length recombinant protein with GST tag. MW of the GST tag alone is 26 KDa.
<b>Sequence</b>	MSVGLDLPQMPLPGSPSPSLKEAFAEDGEAGEGGGRPSLEWRLQQLLPQHPLSLSWLLTSPQGT GPFLPSVVICHLLDQVLSLLHSPVPTPVHSSGPGSKQAVNSWPESLWLVAHAPFLVVC
<b>Host</b>	Mouse
<b>Reactivity</b>	Human
<b>Interspecies Antigen Sequence</b>	Mouse (38); Rat (40)
<b>Isotype</b>	IgG2b Kappa
<b>Quality Control Testing</b>	Antibody Reactive Against Recombinant Protein. Western Blot detection against Immunogen (39.16 KDa) .
<b>Storage Buffer</b>	In 1x PBS, pH 7.4
<b>Storage Instruction</b>	Store at -20°C or lower. Aliquot to avoid repeated freezing and thawing.

## Applications

- Western Blot (Cell lysate)

FOSL2 monoclonal antibody (M01), clone 2B4-1C2 Western Blot analysis of FOSL2 expression in MCF-7 ( Cat # L046V1 ).

[Protocol Download](#)

- Western Blot (Cell lysate)

FOSL2 monoclonal antibody (M01), clone 2B4-1C2. Western Blot analysis of FOSL2 expression in Jurkat ( Cat # L017V1 ).

[Protocol Download](#)

- Western Blot (Recombinant protein)

[Protocol Download](#)

- Sandwich ELISA (Recombinant protein)

Detection limit for recombinant GST tagged FOSL2 is approximately 0.3ng/ml as a capture antibody.

[Protocol Download](#)

- ELISA

- Immunofluorescence

Immunofluorescence of monoclonal antibody to FOSL2 on HeLa cell. [antibody concentration 20 ug/ml]

## Gene Info — FOSL2

Entrez GeneID	<a href="#">2355</a>
---------------	----------------------

GeneBank Accession#	<a href="#">BC008899</a>
---------------------	--------------------------

Protein Accession#	<a href="#">AAH08899</a>
--------------------	--------------------------

Gene Name	FOSL2
-----------	-------

Gene Alias	FLJ23306, FRA2
------------	----------------

Gene Description	FOS-like antigen 2
------------------	--------------------

Omim ID	<a href="#">601575</a>
---------	------------------------

Gene Ontology	<a href="#">Hyperlink</a>
---------------	---------------------------

**Gene Summary**

The Fos gene family consists of 4 members: FOS, FOSB, FOSL1, and FOSL2. These genes encode leucine zipper proteins that can dimerize with proteins of the JUN family, thereby forming the transcription factor complex AP-1. As such, the FOS proteins have been implicated as regulators of cell proliferation, differentiation, and transformation. [provided by RefSeq]

**Other Designations**

-

**Disease**

- [Disease Models](#)
- [Genetic Predisposition to Disease](#)