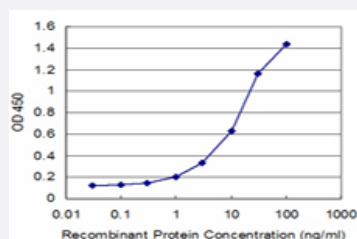


FOLR2 monoclonal antibody (M04), clone 4B12

Catalog # H00002350-M04

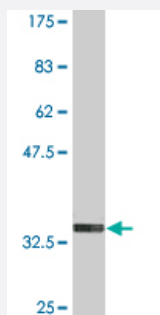
Size 100 ug

Applications



Sandwich ELISA (Recombinant protein)

Detection limit for recombinant GST tagged FOLR2 is approximately 1ng/ml as a capture antibody.



Western Blot detection against Immunogen (35.97 KDa) .

Specification

Product Description

Mouse monoclonal antibody raised against a partial recombinant FOLR2.

Immunogen

FOLR2 (NP_000794.1, 36 a.a. ~ 128 a.a) partial recombinant protein with GST tag. MW of the GST tag alone is 26 KDa.

Sequence

HHKTKPGPEDKLHDQCSPWKKNACCTASTSQELHKDTSRLYNFNWDHCGKMEPACKRHFQDT
CLYECSPNLGPWIIQQVNQTWKRERFLDVPL

Host

Mouse

Reactivity

Human

Interspecies Antigen Sequence	Mouse (89); Rat (88)
Isotype	IgG2a Kappa
Quality Control Testing	Antibody Reactive Against Recombinant Protein. Western Blot detection against Immunogen (35.97 KDa) .
Storage Buffer	In 1x PBS, pH 7.4
Storage Instruction	Store at -20°C or lower. Aliquot to avoid repeated freezing and thawing.

Applications

- Western Blot (Recombinant protein)

[Protocol Download](#)

- Sandwich ELISA (Recombinant protein)

Detection limit for recombinant GST tagged FOLR2 is approximately 1ng/ml as a capture antibody.

[Protocol Download](#)

- ELISA

Gene Info — FOLR2

Entrez GeneID	2350
GeneBank Accession#	NM_000803
Protein Accession#	NP_000794.1
Gene Name	FOLR2
Gene Alias	BETA-HFR, FBP/PL-1, FR-BETA, FR-P3
Gene Description	folate receptor 2 (fetal)
Omim ID	136425
Gene Ontology	Hyperlink

Gene Summary

The protein encoded by this gene is a member of the folate receptor (FOLR) family, and these genes exist in a cluster on chromosome 11. Members of this gene family have a high affinity for folic acid and for several reduced folic acid derivatives, and they mediate delivery of 5-methyltetrahydrofolate to the interior of cells. This protein has a 68% and 79% sequence homology with the FOLR1 and FOLR3 proteins, respectively. Although this protein was originally thought to be specific to placenta, it can also exist in other tissues, and it may play a role in the transport of methotrexate in synovial macrophages in rheumatoid arthritis patients. Multiple transcript variants that encode the same protein have been found for this gene. [provided by RefSeq]

Other Designations

folate receptor 2|folate receptor, beta|folate-binding protein, fetal/placental

Disease

- [Cardiovascular Diseases](#)
- [Cleft Lip](#)
- [Cleft Palate](#)
- [Diabetes Mellitus](#)
- [Edema](#)
- [Genetic Predisposition to Disease](#)
- [Heart Defects](#)
- [Hyperparathyroidism](#)
- [Meningomyelocele](#)
- [Neural Tube Defects](#)
- [Spinal Dysraphism](#)