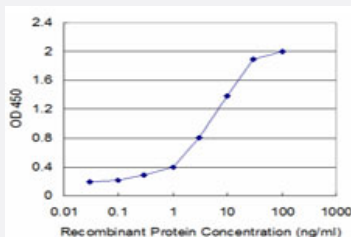


FLT3LG monoclonal antibody (M07), clone 4C4

Catalog # H00002323-M07

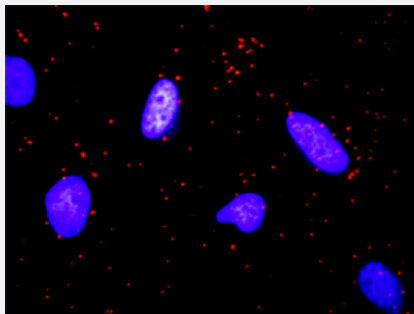
Size 100 ug

Applications



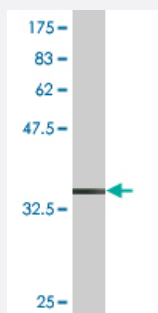
Sandwich ELISA (Recombinant protein)

Detection limit for recombinant GST tagged FLT3LG is approximately 0.03ng/ml as a capture antibody.



In situ Proximity Ligation Assay (Cell)

Proximity Ligation Analysis of protein-protein interactions between KITLG and FLT3LG. HeLa cells were stained with anti-KITLG rabbit purified polyclonal 1:1200 and anti-FLT3LG mouse monoclonal antibody 1:50. Each red dot represents the detection of protein-protein interaction complex, and nuclei were counterstained with DAPI (blue).



Western Blot detection against Immunogen (37.84 KDa) .

Specification

Product Description

Mouse monoclonal antibody raised against a partial recombinant FLT3LG.

Immunogen	FLT3LG (NP_001450, 27 a.a. ~ 136 a.a) partial recombinant protein with GST tag. MW of the GST tag alone is 26 KDa.
Sequence	TQDCSFQHSPISSDFAVKIRELSDYLLQDYPVTVASNLQDEELCGGLWRLVLAQRWMERLKTVA GSKMQGLLERVNTEIHFVTKCAFQPPPSCLRFVQTNISRLQETSE
Host	Mouse
Reactivity	Human
Isotype	IgG2a Kappa
Quality Control Testing	Antibody Reactive Against Recombinant Protein. Western Blot detection against Immunogen (37.84 KDa) .
Storage Buffer	In 1x PBS, pH 7.4
Storage Instruction	Store at -20°C or lower. Aliquot to avoid repeated freezing and thawing.

Applications

- Western Blot (Recombinant protein)

[Protocol Download](#)

- Sandwich ELISA (Recombinant protein)

Detection limit for recombinant GST tagged FLT3LG is approximately 0.03ng/ml as a capture antibody.

[Protocol Download](#)

- ELISA

- In situ* Proximity Ligation Assay (Cell)

Proximity Ligation Analysis of protein-protein interactions between KITLG and FLT3LG. HeLa cells were stained with anti-KITLG rabbit purified polyclonal 1:1200 and anti-FLT3LG mouse monoclonal antibody 1:50. Each red dot represents the detection of protein-protein interaction complex, and nuclei were counterstained with DAPI (blue).

Gene Info — FLT3LG

Entrez GeneID	2323
GeneBank Accession#	NM_001459
Protein Accession#	NP_001450

Gene Name	FLT3LG
Gene Alias	FL
Gene Description	fms-related tyrosine kinase 3 ligand
Omim ID	600007
Gene Ontology	Hyperlink
Other Designations	-

Pathway

- [Cytokine-cytokine receptor interaction](#)
- [Hematopoietic cell lineage](#)
- [Pathways in cancer](#)

Disease

- [Genetic Predisposition to Disease](#)
- [Ovarian Neoplasms](#)