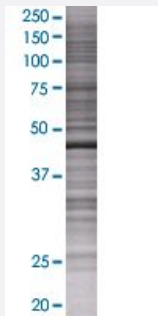


FLOT2 293T Cell Transient Overexpression Lysate(Denatured)

Catalog # H00002319-T02

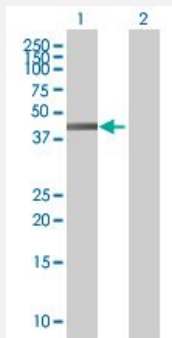
Size 100 uL

Applications



SDS-PAGE Gel

FLOT2 transfected lysate.



Western Blot

Lane 1: FLOT2 transfected lysate (41.8 KDa)

Lane 2: Non-transfected lysate.

Specification

Transfected Cell Line 293T

Plasmid pCMV-FLOT2 full-length

Host Human

Theoretical MW (kDa) 41.8

Quality Control Testing Transient overexpression cell lysate was tested with Anti-FLOT2 antibody ([H00002319-B02](#)) by Western Blots.
SDS-PAGE Gel
FLOT2 transfected lysate.
Western Blot
Lane 1: FLOT2 transfected lysate (41.8 KDa)
Lane 2: Non-transfected lysate.

Storage Buffer

1X Sample Buffer (50 mM Tris-HCl, 2% SDS, 10% glycerol, 300 mM 2-mercaptoethanol, 0.01% Bromophenol blue)

Storage Instruction

Store at -80°C. Aliquot to avoid repeated freezing and thawing.

Applications

- Western Blot

Gene Info — FLOT2

Entrez GeneID[2319](#)**GeneBank Accession#**[BC017292.1](#)**Protein Accession#**[AAH17292.1](#)**Gene Name**

FLOT2

Gene Alias

ECS-1, ECS1, ESA, ESA1, M17S1

Gene Description

flotillin 2

Omim ID[131560](#)**Gene Ontology**[Hyperlink](#)**Gene Summary**

Caveolae are small domains on the inner cell membrane involved in vesicular trafficking and signal transduction. This gene encodes a caveolae-associated, integral membrane protein, which is thought to function in neuronal signaling. [provided by RefSeq]

Other Designations

Flotillin 2 (epidermal surface antigen 1)|membrane component, chromosome 17, surface marker 1 (35kD protein identified by monoclonal antibody ECS-1)

Pathway

- [Insulin signaling pathway](#)