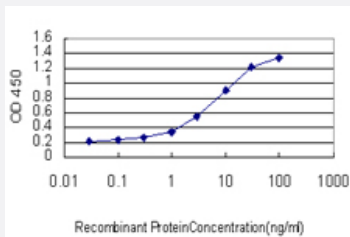


FOXO1A monoclonal antibody (M01), clone 4E9

Catalog # H00002308-M01

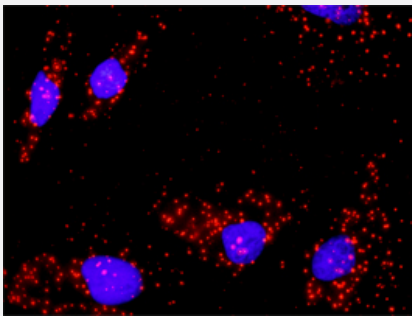
Size 100 ug

Applications



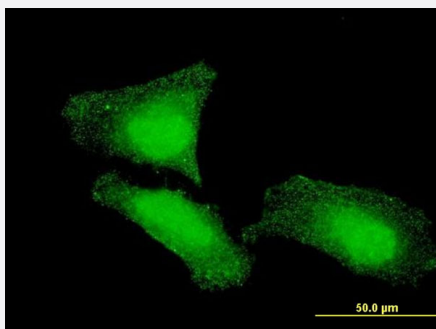
Sandwich ELISA (Recombinant protein)

Detection limit for recombinant GST tagged FOXO1A is approximately 0.1 ng/ml as a capture antibody.



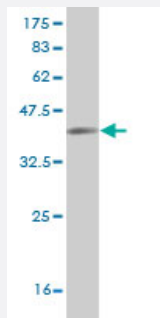
In situ Proximity Ligation Assay (Cell)

Proximity Ligation Analysis of protein-protein interactions between AKT1 and FOXO1. HeLa cells were stained with anti-AKT1 rabbit purified polyclonal 1:1200 and anti-FOXO1 mouse monoclonal antibody 1:50. Each red dot represents the detection of protein-protein interaction complex, and nuclei were counterstained with DAPI (blue).



Immunofluorescence

Immunofluorescence of monoclonal antibody to FOXO1 on HeLa cell .
[antibody concentration 10 ug/ml]



Western Blot detection against Immunogen (36.74 KDa) .

Specification

Product Description	Mouse monoclonal antibody raised against a partial recombinant FOXO1A.
Immunogen	FOXO1A (NP_002006, 556 a.a. ~ 655 a.a) partial recombinant protein with GST tag. MW of the GST tag alone is 26 KDa.
Sequence	TQVKTPVQVPLPHPMQMSALGGYSSVSSCNGYGRMGLLHQEKLPDLDGMFIERLDCDMESIIR NDLMDGDTLDFNFDNVLPNQSFPHSVKTTTHSWVSG
Host	Mouse
Reactivity	Human
Isotype	IgG2a Kappa
Quality Control Testing	Antibody Reactive Against Recombinant Protein. Western Blot detection against Immunogen (36.74 KDa) .
Storage Buffer	In 1x PBS, pH 7.4
Storage Instruction	Store at -20°C or lower. Aliquot to avoid repeated freezing and thawing.

Applications

- Western Blot (Recombinant protein)

[Protocol Download](#)

- Sandwich ELISA (Recombinant protein)

Detection limit for recombinant GST tagged FOXO1A is approximately 0.1ng/ml as a capture antibody.

[Protocol Download](#)

- ELISA

- *In situ* Proximity Ligation Assay (Cell)

Proximity Ligation Analysis of protein-protein interactions between AKT1 and FOXO1. HeLa cells were stained with anti-AKT1 rabbit purified polyclonal 1:1200 and anti-FOXO1 mouse monoclonal antibody 1:50. Each red dot represents the detection of protein-protein interaction complex, and nuclei were counterstained with DAPI (blue).

- Immunofluorescence

Immunofluorescence of monoclonal antibody to FOXO1 on HeLa cell . [antibody concentration 10 ug/ml]

Gene Info — FOXO1

Entrez GeneID [2308](#)

GeneBank Accession# [NM_002015](#)

Protein Accession# [NP_002006](#)

Gene Name FOXO1

Gene Alias FKH1, FKHR, FOXO1A

Gene Description forkhead box O1

Omim ID [136533](#) [268220](#)

Gene Ontology [Hyperlink](#)

Gene Summary This gene belongs to the forkhead family of transcription factors which are characterized by a distinct forkhead domain. The specific function of this gene has not yet been determined; however, it may play a role in myogenic growth and differentiation. Translocation of this gene with PAX3 has been associated with alveolar rhabdomyosarcoma. [provided by RefSeq]

Other Designations OTTHUMP00000018301|forkhead box O1A (rhabdomyosarcoma)|forkhead homolog in rhabdomyosarcoma|forkhead, Drosophila, homolog of, in rhabdomyosarcoma

Pathway

- [Insulin signaling pathway](#)
- [Pathways in cancer](#)
- [Prostate cancer](#)

Disease

- [Atherosclerosis](#)
- [Attention Deficit Disorder with Hyperactivity](#)
- [Autistic Disorder](#)
- [Calcinosis](#)
- [Coronary Artery Disease](#)
- [Diabetes Mellitus](#)
- [Genetic Predisposition to Disease](#)
- [Glucose Intolerance](#)
- [Head and Neck Neoplasms](#)
- [NARP](#)
- [Neoplasm Recurrence](#)
- [Neoplasms](#)
- [Obesity](#)