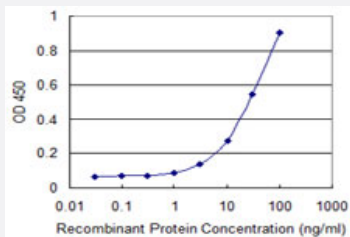


FOXM1 monoclonal antibody (M05), clone 2H4

Catalog # H00002305-M05

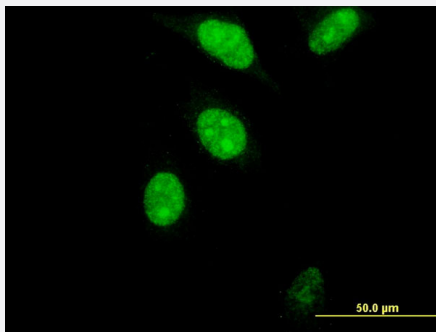
Size 100 ug

Applications



Sandwich ELISA (Recombinant protein)

Detection limit for recombinant GST tagged FOXM1 is 1 ng/ml as a capture antibody.



Immunofluorescence

Immunofluorescence of monoclonal antibody to FOXM1 on HeLa cell .
[antibody concentration 20 ug/ml]



Western Blot detection against Immunogen (35.53 KDa) .

Specification

Product Description

Mouse monoclonal antibody raised against a full length recombinant FOXM1.

Immunogen	FOX M1 (NP_973731, 22 a.a. ~ 110 a.a) full-length recombinant protein with GST tag. MW of the GST tag alone is 26 KDa.
Sequence	NAPSETSEEEPKRSPAQQESNQAEASKEVAESNSCKFPAGIKIINHPTMPNTQVVAIPNNANIHSIIT ALTAKGKESGSSGPNKFILIS
Host	Mouse
Reactivity	Human
Interspecies Antigen Sequence	Mouse (85); Rat (89)
Isotype	IgG2a Kappa
Quality Control Testing	Antibody Reactive Against Recombinant Protein. Western Blot detection against Immunogen (35.53 KDa) .
Storage Buffer	In 1x PBS, pH 7.4
Storage Instruction	Store at -20°C or lower. Aliquot to avoid repeated freezing and thawing.

Applications

- Western Blot (Recombinant protein)

[Protocol Download](#)

- Sandwich ELISA (Recombinant protein)

Detection limit for recombinant GST tagged FOXM1 is 1 ng/ml as a capture antibody.

[Protocol Download](#)

- ELISA

- Immunofluorescence

Immunofluorescence of monoclonal antibody to FOXM1 on HeLa cell . [antibody concentration 20 ug/ml]

Gene Info — FOXM1

Entrez GeneID [2305](#)

GeneBank Accession# [NM_202002](#)

Protein Accession#	NP_973731
Gene Name	FOX M1
Gene Alias	FKHL16, FOXM1B, HFH-11, HFH11, HNF-3, INS-1, MPHOSPH2, MPP-2, MPP2, PIG29, TGT3, TRIDENT
Gene Description	forkhead box M1
Omim ID	602341
Gene Ontology	Hyperlink
Gene Summary	drosophila
Other Designations	Forkhead, drosophila, homolog-like 16 M-phase phosphoprotein 2 forkhead-like 16

Disease

- [Kidney Failure](#)