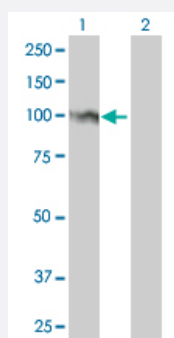


FOXM1 monoclonal antibody (M01), clone 3A9

Catalog # H00002305-M01

Size 50 ug

Applications

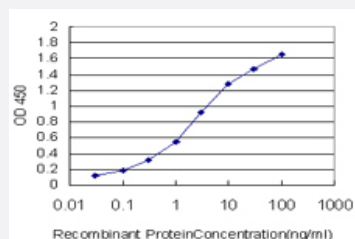


Western Blot (Transfected lysate)

Western Blot analysis of FOXM1 expression in transfected 293T cell line by FOXM1 monoclonal antibody (M01), clone 3A9.

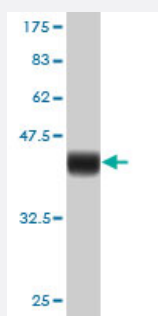
Lane 1: FOXM1 transfected lysate (84 KDa).

Lane 2: Non-transfected lysate.



Sandwich ELISA (Recombinant protein)

Detection limit for recombinant GST tagged FOXM1 is approximately 0.03 ng/ml as a capture antibody.



Western Blot detection against Immunogen (36.74 KDa) .

Specification

Product Description

Mouse monoclonal antibody raised against a partial recombinant FOXM1.

Immunogen	FOX M1 (NP_973731.1, 702 a.a. ~ 801 a.a) partial recombinant protein with GST tag. MW of the GST tag alone is 26 KDa.
Sequence	LQSAPPLESPQRLLSSEPLDLISVPFGNSSPSDIDVPKPGSPEPQVSGLAANRSLTEGLVLDTMN DSLKILLDISFPGLDEDPLGPDNINWSQFIPELQ
Host	Mouse
Reactivity	Human
Interspecies Antigen Sequence	Mouse (74); Rat (73)
Isotype	IgG2a Kappa
Quality Control Testing	Antibody Reactive Against Recombinant Protein. Western Blot detection against Immunogen (36.74 KDa) .
Storage Buffer	In 1x PBS, pH 7.4
Storage Instruction	Store at -20°C or lower. Aliquot to avoid repeated freezing and thawing.

Applications

- Western Blot (Transfected lysate)

Western Blot analysis of FOXM1 expression in transfected 293T cell line by FOXM1 monoclonal antibody (M01), clone 3A9.

Lane 1: FOXM1 transfected lysate(84 KDa).

Lane 2: Non-transfected lysate.

[Protocol Download](#)

- Western Blot (Recombinant protein)

[Protocol Download](#)

- Sandwich ELISA (Recombinant protein)

Detection limit for recombinant GST tagged FOXM1 is approximately 0.03ng/ml as a capture antibody.

[Protocol Download](#)

- ELISA

Gene Info — FOXM1

Entrez GeneID	2305
GeneBank Accession#	NM_202002
Protein Accession#	NP_973731.1
Gene Name	FOX M1
Gene Alias	FKHL16, FOX M1B, HFH-11, HFH11, HNF-3, INS-1, MPHOSPH2, MPP-2, MPP2, PIG29, TGT3, TRIDENT
Gene Description	forkhead box M1
Omim ID	602341
Gene Ontology	Hyperlink
Gene Summary	drosophila
Other Designations	Forkhead, drosophila, homolog-like 16 M-phase phosphoprotein 2 forkhead-like 16

Disease

- [Kidney Failure](#)