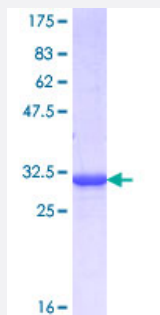


FOXG1 (Human) Recombinant Protein (Q03)

Catalog # H00002290-Q03

Size 25 ug, 10 ug

Applications



Specification

Product Description	Human FOXG1 partial ORF (CAA52241.1, 164 a.a. - 224 a.a.) recombinant protein with GST tag at N-terminal.
Sequence	SPFLSLHHPRASSTLSYNGTTSAYPSHPMPYSSVLTQNSLGNNHSFSTANGLSVDRLVNGE
Host	Wheat Germ (in vitro)
Theoretical MW (kDa)	32.45
Interspecies Antigen Sequence	Mouse (100); Rat (100)
Preparation Method	in vitro wheat germ expression system
Purification	Glutathione Sepharose 4 Fast Flow
Quality Control Testing	12.5% SDS-PAGE Stained with Coomassie Blue
Storage Buffer	50 mM Tris-HCl, 10 mM reduced Glutathione, pH=8.0 in the elution buffer.
Storage Instruction	Store at -80°C. Aliquot to avoid repeated freezing and thawing.
Note	Best use within three months from the date of receipt of this protein.

Applications

- Enzyme-linked Immunoabsorbent Assay
- Western Blot (Recombinant protein)
- Antibody Production
- Protein Array

Gene Info — FOXG1

Entrez GeneID	2290
GeneBank Accession#	X74144.1
Protein Accession#	CAA52241.1
Gene Name	FOXG1
Gene Alias	BF1, BF2, FHKL3, FKH2, FKHL1, FKHL2, FKHL3, FKHL4, FOXG1A, FOXG1B, FOXG1C, HBF-1, HBF-2, HBF-3, HBF-G2, HBF2, HFK1, HFK2, HFK3, KHL2, QIN
Gene Description	forkhead box G1
Omim ID	164874
Gene Ontology	Hyperlink
Gene Summary	This gene belongs to the forkhead family of transcription factors which is characterized by a distinct forkhead domain. The specific function of this gene has not yet been determined; however, it may play a role in the development of the brain and telencephalon. [provided by RefSeq]
Other Designations	OTTHUMP00000178764 brain factor 2 forkhead box G1A forkhead box G1B forkhead box G1C forkhead, drosophila, homolog-like 2 forkhead-like 1 forkhead-like 2 forkhead-like 3 forkhead-like 4 oncogene QIN

Disease

- [Rett Syndrome](#)