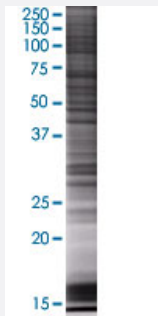


FKBP3 293T Cell Transient Overexpression Lysate(Denatured)

Catalog # H00002287-T01

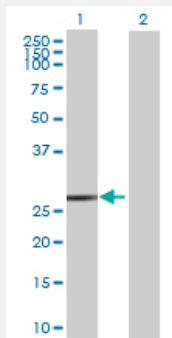
Size 100 uL

Applications



SDS-PAGE Gel

FKBP3 transfected lysate.



Western Blot

Lane 1: FKBP3 transfected lysate (24.75 KDa)

Lane 2: Non-transfected lysate.

Specification

Transfected Cell Line 293T

Plasmid pCMV-FKBP3 full-length

Host Human

Theoretical MW (kDa) 24.75

Quality Control Testing Transient overexpression cell lysate was tested with Anti-FKBP3 antibody ([H00002287-B01](#)) by Western Blots.
 SDS-PAGE Gel
 FKBP3 transfected lysate.
 Western Blot
 Lane 1: FKBP3 transfected lysate (24.75 KDa)
 Lane 2: Non-transfected lysate.

| | |
|----------------------------|---|
| Storage Buffer | 1X Sample Buffer (50 mM Tris-HCl, 2% SDS, 10% glycerol, 300 mM 2-mercaptoethanol, 0.01% Bromophenol blue) |
| Storage Instruction | Store at -80°C. Aliquot to avoid repeated freezing and thawing. |

Applications

- Western Blot

Gene Info — FKBP3

| | |
|----------------------------|--------------------------------|
| Entrez GeneID | 2287 |
| GeneBank Accession# | NM_002013.2 |
| Protein Accession# | NP_002004.1 |
| Gene Name | FKBP3 |
| Gene Alias | FKBP-25, PPase |
| Gene Description | FK506 binding protein 3, 25kDa |
| Omim ID | 186947 |
| Gene Ontology | Hyperlink |

| | |
|---------------------------|--|
| Gene Summary | The protein encoded by this gene is a member of the immunophilin protein family, which play a role in immunoregulation and basic cellular processes involving protein folding and trafficking. This encoded protein is a cis-trans prolyl isomerase that binds the immunosuppressants FK506 and rapamycin, as well as histone deacetylases, the transcription factor YY1, casein kinase II, and nucleolin. It has a higher affinity for rapamycin than for FK506 and thus may be an important target molecule for immunosuppression by rapamycin. [provided by RefSeq] |
| Other Designations | FK506 binding protein 3 (25kD) FK506-binding protein 25, T-cell FK506-binding protein 3 (25kD) peptidyl-prolyl cis-trans isomerase rapamycin binding protein rapamycin-selective 25 kDa immunophilin rotamase |

Disease

- [Cardiovascular Diseases](#)
- [Diabetes Mellitus](#)

- [Edema](#)