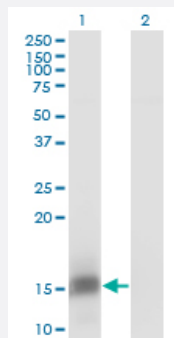


FKBP1B monoclonal antibody (M01), clone 4H5-1B6

Catalog # H00002281-M01

Size 100 ug

Applications

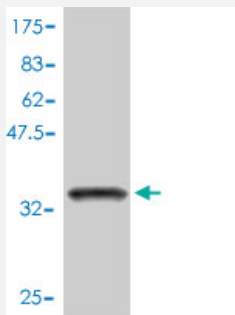


Western Blot (Transfected lysate)

Western Blot analysis of FKBP1B expression in transfected 293T cell line by FKBP1B monoclonal antibody (M01), clone 4H5-1B6.

Lane 1: FKBP1B transfected lysate (11.8 KDa).

Lane 2: Non-transfected lysate.



Western Blot detection against Immunogen (34.54 KDa).

Specification

| | |
|----------------------------|---|
| Product Description | Mouse monoclonal antibody raised against a full length recombinant FKBP1B. |
| Immunogen | FKBP1B (AAH02614, 1 a.a. ~ 80 a.a) full-length recombinant protein with GST tag. MW of the GST tag alone is 26 KDa. |
| Sequence | MGVEIETISPGDGRTFPPKKGQTCVVHYTGMLQNGKKFDSSDRNKPFPKFRIGKQEVIKGFEEGAAQLGPLSPLPICPHPC |
| Host | Mouse |
| Reactivity | Human |

| | |
|-------------------------------|--|
| Interspecies Antigen Sequence | Mouse (96); Rat (97) |
| Isotype | IgG1 kappa |
| Quality Control Testing | Antibody Reactive Against Recombinant Protein. Western Blot detection against Immunogen (34.54 KDa) . |
| Storage Buffer | In 1x PBS, pH 7.4 |
| Storage Instruction | Store at -20°C or lower. Aliquot to avoid repeated freezing and thawing. |

Applications

- Western Blot (Transfected lysate)

Western Blot analysis of FKBP1B expression in transfected 293T cell line by FKBP1B monoclonal antibody (M01), clone 4H5-1B6.

Lane 1: FKBP1B transfected lysate(11.8 KDa).

Lane 2: Non-transfected lysate.

[Protocol Download](#)

- Western Blot (Recombinant protein)

[Protocol Download](#)

- ELISA

Gene Info — FKBP1B

| | |
|---------------------|--|
| Entrez GeneID | 2281 |
| GeneBank Accession# | BC002614 |
| Protein Accession# | AAH02614 |
| Gene Name | FKBP1B |
| Gene Alias | FKBP12.6, FKBP1L, OTK4, PKBP1L, PPlase |
| Gene Description | FK506 binding protein 1B, 12.6 kDa |
| Omim ID | 600620 |

Gene Ontology

[Hyperlink](#)

Gene Summary

The protein encoded by this gene is a member of the immunophilin protein family, which play a role in immunoregulation and basic cellular processes involving protein folding and trafficking. This encoded protein is a cis-trans prolyl isomerase that binds the immunosuppressants FK506 and rapamycin. It is highly similar to the FK506-binding protein 1A. Its physiological role is thought to be in excitation-contraction coupling in cardiac muscle. There are two alternatively spliced transcript variants of this gene encoding different isoforms. [provided by RefSeq]

Other Designations

FK506-binding protein 1-like|FK506-binding protein 12.6|OTTHUMP00000116040|OTTHUMP0000116041|calstabin 2|immunophilin FKBP12.6|peptidyl-prolyl cis-trans isomerase|rotamase

Publication Reference

- [Dantrolene inhibition of ryanodine channels \(RyR2\) in artificial lipid bilayers depends on FKBP12.6.](#)

Kafa Walweel, Nicole Beard, Dirk F van Helden, Derek R Laver.

The Journal of General Physiology 2023 Jun; 155(8):e202213277.

Application: Stimulation, Sheep, Sheep heart

Disease

- [Hypertension](#)