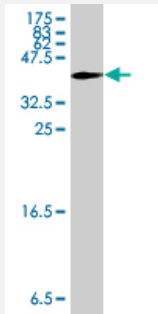


# FKBP1B polyclonal antibody (A01)

Catalog # H00002281-A01

Size 50 uL

## Applications



Western Blot detection against Immunogen (34.91 KDa) .

## Specification

<b>Product Description</b>	Mouse polyclonal antibody raised against a full-length recombinant FKBP1B.
<b>Immunogen</b>	FKBP1B (AAH02614, 1 a.a. ~ 80 a.a) full-length recombinant protein with GST tag.
<b>Sequence</b>	MGVEIETISPGDGRTFPKKGQTCVVHYTGMLQNGKKFDSSDRNKPFFKFRIGKQEVIKGFEEGAA QLGPLSPLPICPHPC
<b>Host</b>	Mouse
<b>Reactivity</b>	Human
<b>Interspecies Antigen Sequence</b>	Mouse (96); Rat (97)
<b>Quality Control Testing</b>	Antibody Reactive Against Recombinant Protein. Western Blot detection against Immunogen (34.91 KDa) .
<b>Storage Buffer</b>	50 % glycerol
<b>Storage Instruction</b>	Store at -20°C or lower. Aliquot to avoid repeated freezing and thawing.

## Applications

- Western Blot (Recombinant protein)

[Protocol Download](#)

- ELISA

## Gene Info — FKBP1B

Entrez GeneID [2281](#)

GeneBank Accession# [BC002614](#)

Protein Accession# [AAH02614](#)

Gene Name FKBP1B

Gene Alias FKBP12.6, FKBP1L, OTK4, PKBP1L, PPlase

Gene Description FK506 binding protein 1B, 12.6 kDa

Omim ID [600620](#)

Gene Ontology [Hyperlink](#)

**Gene Summary** The protein encoded by this gene is a member of the immunophilin protein family, which play a role in immunoregulation and basic cellular processes involving protein folding and trafficking. This encoded protein is a cis-trans prolyl isomerase that binds the immunosuppressants FK506 and rapamycin. It is highly similar to the FK506-binding protein 1A. Its physiological role is thought to be in excitation-contraction coupling in cardiac muscle. There are two alternatively spliced transcript variants of this gene encoding different isoforms. [provided by RefSeq]

**Other Designations** FK506-binding protein 1-like|FK506-binding protein 12.6|OTTHUMP00000116040|OTTHUMP00000116041|calstabin 2|immunophilin FKBP12.6|peptidyl-prolyl cis-trans isomerase|rotamase

## Disease

- [Hypertension](#)