

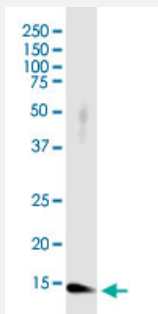
CX Grade

FKBP1A monoclonal antibody (M01J), clone 1E5-A12

Catalog # H00002280-M01J

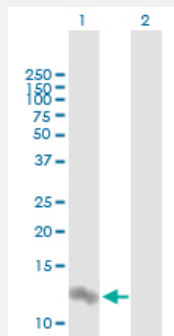
Size 100 ug

Applications



Western Blot (Cell lysate)

FKBP1A monoclonal antibody (M01J), clone 1E5-A12. Western Blot analysis of FKBP1A expression in HL-60.

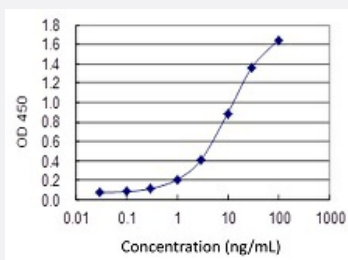


Western Blot (Transfected lysate)

Western Blot analysis of FKBP1A expression in transfected 293T cell line by FKBP1A monoclonal antibody (M01J), clone 1E5-A12.

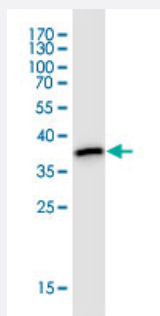
Lane 1: FKBP1A transfected lysate (Predicted MW: 12 KDa).

Lane 2: Non-transfected lysate.



Sandwich ELISA (Recombinant protein)

Detection limit for recombinant GST tagged FKBP1A is 0.1 ng/ml as a capture antibody.



Western Blot detection against Immunogen (37.62 KDa) .

Specification

Product Description	Mouse monoclonal antibody raised against a full-length recombinant FKBP1A. This product is belong to Cell Culture Grade Antibody (CX Grade).
Immunogen	FKBP1A (AAH05147, 1 a.a. ~ 108 a.a) full-length recombinant protein with GST tag. MW of the GST tag alone is 26 KDa.
Sequence	MGVQVETISPGDGRTFPKRGQTCVVHYTGMLDGGKKFDSSDRNKPFFKMLGKQEVIRGWEEG VAQMSVGQRAKL TISPDYAYGATGHPGIIPPHATLVFDVELLKE
Host	Mouse
Reactivity	Human
Preparation Method	Cell Culture Production
Isotype	IgG1 Kappa
Quality Control Testing	Antibody Reactive Against Recombinant Protein. Western Blot detection against Immunogen (37.62 KDa) .
Storage Buffer	In 1x PBS, pH 7.4
Storage Instruction	Store at -20°C or lower. Aliquot to avoid repeated freezing and thawing.

Applications

- Western Blot (Cell lysate)

FKBP1A monoclonal antibody (M01J), clone 1E5-A12. Western Blot analysis of FKBP1A expression in HL-60.

[Protocol Download](#)

- Western Blot (Transfected lysate)

Western Blot analysis of FKBP1A expression in transfected 293T cell line by FKBP1A monoclonal antibody (M01J), clone 1E5-A12.

Lane 1: FKBP1A transfected lysate (Predicted MW: 12 KDa).

Lane 2: Non-transfected lysate.

[Protocol Download](#)

- Western Blot (Recombinant protein)

[Protocol Download](#)

- Sandwich ELISA (Recombinant protein)

Detection limit for recombinant GST tagged FKBP1A is 0.1 ng/ml as a capture antibody.

[Protocol Download](#)

- ELISA

Gene Info — FKBP1A

Entrez GeneID	2280
---------------	----------------------

GeneBank Accession#	BC005147
---------------------	--------------------------

Protein Accession#	AAH05147
--------------------	--------------------------

Gene Name	FKBP1A
-----------	--------

Gene Alias	FKBP-12, FKBP1, FKBP12, FKBP12C, PKC12, PKC12, PPIASE
------------	-------------------------------------------------------

Gene Description	FK506 binding protein 1A, 12kDa
------------------	---------------------------------

Omim ID	186945
---------	------------------------

Gene Ontology	Hyperlink
---------------	---------------------------

Gene Summary

The protein encoded by this gene is a member of the immunophilin protein family, which play a role in immunoregulation and basic cellular processes involving protein folding and trafficking. The protein is a cis-trans prolyl isomerase that binds the immunosuppressants FK506 and rapamycin. It interacts with several intracellular signal transduction proteins including type I TGF-beta receptor. It also interacts with multiple intracellular calcium release channels, and coordinates multi-protein complex formation of the tetrameric skeletal muscle ryanodine receptor. In mouse, deletion of this homologous gene causes congenital heart disorder known as noncompaction of left ventricular myocardium. Multiple alternatively spliced variants, encoding the same protein, have been identified. The human genome contains five pseudogenes related to this gene, at least one of which is transcribed. [provided by RefSeq]

Other Designations

FK506-binding protein 1|FK506-binding protein 12|FK506-binding protein 1A (12kD)|FK506-binding protein, T-cell, 12-kD|OTTHUMP00000029978|immunophilin FKBP12|peptidyl-prolyl cis-trans isomerase|protein kinase C inhibitor 2|rotamase

Disease

- [Cardiovascular Diseases](#)
- [Diabetes Mellitus](#)
- [Edema](#)
- [Kidney Failure](#)