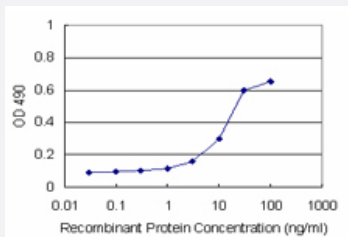


FHL2 (Human) Matched Antibody Pair

Catalog # H00002274-AP21

Size 1 Set

Applications



Sandwich ELISA detection sensitivity ranging from 3 ng/ml to 100 ng/ml.

Specification

Product Description	This antibody pair set comes with a matched antibody pair to detect and quantify the protein level of human FHL2.
Reactivity	Human
Quality Control Testing	Standard curve using recombinant protein (H00002274-P01) as an analyte. Sandwich ELISA detection sensitivity ranging from 3 ng/ml to 100 ng/ml.
Supplied Product	Antibody pair set content: 1. Capture antibody: rabbit MaxPab® affinity purified polyclonal anti-FHL2 (100 ug) 2. Detection antibody: mouse purified polyclonal anti-FHL2 (20 ug) *Reagents are sufficient for at least 1-2 x 96 well plates using recommended protocols.
Storage Instruction	Store reagents of the antibody pair set at -20°C or lower. Please aliquot to avoid repeated freeze thaw cycle. Reagents should be returned to -20°C storage immediately after use.

Applications

- ELISA Pair (Recombinant protein)

[Protocol Download](#)

Gene Info — FHL2

Entrez GeneID	2274
Gene Name	FHL2
Gene Alias	AAG11, DRAL, SLIM3
Gene Description	four and a half LIM domains 2
Omim ID	602633
Gene Ontology	Hyperlink
Gene Summary	LIM proteins contain a highly conserved double zinc finger motif called the LIM domain.[supplied by OMIM]
Other Designations	aging-associated gene 11 down-regulated in rhabdomyosarcoma LIM protein four and a half LIM-domain protein 2