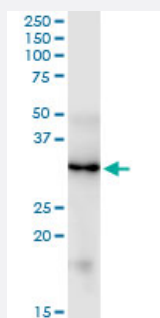


# FGF5 monoclonal antibody (M01), clone 1B4

Catalog # H00002250-M01

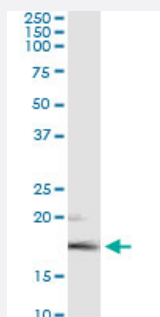
Size 100 ug

## Applications



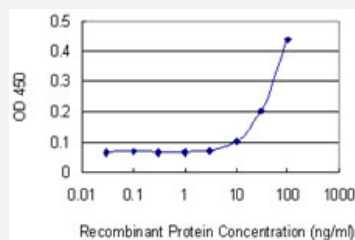
### Western Blot (Tissue lysate)

FGF5 monoclonal antibody (M01), clone 1B4. Western Blot analysis of FGF5 expression in human colon.



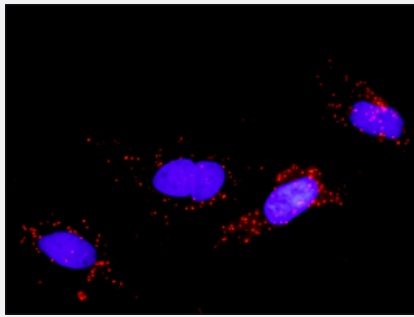
### Immunoprecipitation

Immunoprecipitation of FGF5 transfected lysate using anti-FGF5 monoclonal antibody and Protein A Magnetic Bead, and immunoblotted with FGF5 MaxPab rabbit polyclonal antibody.



### Sandwich ELISA (Recombinant protein)

Detection limit for recombinant GST tagged FGF5 is 3 ng/ml as a capture antibody.



### *In situ Proximity Ligation Assay (Cell)*

Proximity Ligation Analysis of protein-protein interactions between FGFR2 and FGF5. HeLa cells were stained with anti-FGFR2 rabbit purified polyclonal 1:1200 and anti-FGF5 mouse monoclonal antibody 1:50. Each red dot represents the detection of protein-protein interaction complex, and nuclei were counterstained with DAPI (blue).

## Specification

<b>Product Description</b>	Mouse monoclonal antibody raised against a partial recombinant FGF5.
<b>Immunogen</b>	FGF5 (NP_004455.2, 159 a.a. ~ 268 a.a) partial recombinant protein with GST tag. MW of the GST tag alone is 26 KDa.
<b>Sequence</b>	DCKFRERFQENSYNTYASAIHRTEKTGREWYVALNKRKGAKRGCSPRVKPQHISTHFLPRFKQSE QPELSFTVTVPEKKKPPSPIKPKIPLSAPRKNTNSVKYRLKFRFG
<b>Host</b>	Mouse
<b>Reactivity</b>	Human
<b>Isotype</b>	IgG1 Kappa
<b>Quality Control Testing</b>	Antibody Reactive Against Recombinant Protein.
<b>Storage Buffer</b>	In 1x PBS, pH 7.4
<b>Storage Instruction</b>	Store at -20°C or lower. Aliquot to avoid repeated freezing and thawing.

## Applications

### ● Western Blot (Tissue lysate)

FGF5 monoclonal antibody (M01), clone 1B4. Western Blot analysis of FGF5 expression in human colon.

[Protocol Download](#)

- Immunoprecipitation

Immunoprecipitation of FGF5 transfected lysate using anti-FGF5 monoclonal antibody and Protein A Magnetic Bead, and immunoblotted with FGF5 MaxPab rabbit polyclonal antibody.

[Protocol Download](#)

- Sandwich ELISA (Recombinant protein)

Detection limit for recombinant GST tagged FGF5 is 3 ng/ml as a capture antibody.

[Protocol Download](#)

- ELISA

- In situ* Proximity Ligation Assay (Cell)

Proximity Ligation Analysis of protein-protein interactions between FGFR2 and FGF5. HeLa cells were stained with anti-FGFR2 rabbit purified polyclonal 1:1200 and anti-FGF5 mouse monoclonal antibody 1:50. Each red dot represents the detection of protein-protein interaction complex, and nuclei were counterstained with DAPI (blue).

## Gene Info — FGF5

Entrez GeneID [2250](#)

GeneBank Accession# [NM\\_004464](#)

Protein Accession# [NP\\_004455.2](#)

Gene Name FGF5

Gene Alias HBGF-5, Smag-82

Gene Description fibroblast growth factor 5

Omim ID [165190](#)

Gene Ontology [Hyperlink](#)

**Gene Summary** The protein encoded by this gene is a member of the fibroblast growth factor (FGF) family. FGF family members possess broad mitogenic and cell survival activities, and are involved in a variety of biological processes, including embryonic development, cell growth, morphogenesis, tissue repair, tumor growth and invasion. This gene was identified as an oncogene, which confers transforming potential when transfected into mammalian cells. Targeted disruption of the homolog of this gene in mouse resulted in the phenotype of abnormally long hair, which suggested a function as an inhibitor of hair elongation. Alternatively spliced transcript variants encoding different isoforms have been identified. [provided by RefSeq]

**Other Designations** heparin-binding growth factor 5

## Publication Reference

- [Evidence of post-transcriptional readthrough regulation in FGF5 gene of alpaca.](#)

Pallotti S, Pediconi D, Subramanian D, Molina MG, Antonini M, Morelli MB, Renieri C, La Terza A.

Gene 2018 Mar; 647:121.

Application: WB, Sheep, Skin biopsies

## Pathway

- [MAPK signaling pathway](#)
- [Melanoma](#)
- [Pathways in cancer](#)
- [Regulation of actin cytoskeleton](#)

## Disease

- [Cardiovascular Diseases](#)
- [Cleft Lip](#)
- [Cleft Palate](#)
- [Genetic Predisposition to Disease](#)
- [Head and Neck Neoplasms](#)
- [Hypertension](#)
- [Neoplasm Recurrence](#)
- [Neoplasms](#)