

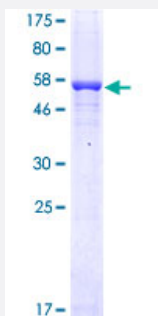
Full-Length

FCN1 (Human) Recombinant Protein (P01)

Catalog # H00002219-P01

Size 25 ug, 10 ug

Applications



Specification

Product Description

Human FCN1 full-length ORF (NP_001994.2, 1 a.a. - 326 a.a.) recombinant protein with GST-tag at N-terminal.

Sequence

MELSGATMARGLAVLLVFLHIKNLPAQAADTCPEVKVVGLEGSDKLTILRGCPGLPGAPGPKGE
AGVIGERGERGLPGAPGKAGPVGPKGDRGEKGMERGEKGDAGQSQSCATGPRNCKDLLDRGYF
LSGWHTIYLPDCRPLTVLCDMDTDGGGWTVFQRRMDGSVD FYRDWAAYKQGFGSQLGEFWLG
NDNIHALTAQGSSELRVLDLDFEGNHQFAKYKSFKVADEAEKYKLVLGAFVGG SAGNSLTGHNN
NFFSTKDQDNDVSSNCAEKFQGAWWYADCHASNLNGLYLMGP HESYANGINWSAAKG YKYSY
KVSEMKVRPA

Host

Wheat Germ (in vitro)

Theoretical MW (kDa)

61.5

Preparation Method

[in vitro wheat germ expression system](#)

Purification

Glutathione Sepharose 4 Fast Flow

Quality Control Testing

12.5% SDS-PAGE Stained with Coomassie Blue.

Storage Buffer

50 mM Tris-HCl, 10 mM reduced Glutathione, pH=8.0 in the elution buffer.

Storage Instruction

Store at -80°C. Aliquot to avoid repeated freezing and thawing.

Note

Best use within three months from the date of receipt of this protein.

Applications

- Enzyme-linked Immunoabsorbent Assay
- Western Blot (Recombinant protein)
- Antibody Production
- Protein Array

Gene Info — FCN1

Entrez GeneID [2219](#)

GeneBank Accession# [NM_002003.2](#)

Protein Accession# [NP_001994.2](#)

Gene Name FCN1

Gene Alias FCNM

Gene Description ficolin (collagen/fibrinogen domain containing) 1

Omim ID [601252](#)

Gene Ontology [Hyperlink](#)

Gene Summary The ficolin family of proteins are characterized by the presence of a leader peptide, a short N-terminal segment, followed by a collagen-like region, and a C-terminal fibrinogen-like domain. The collagen-like and the fibrinogen-like domains are also found separately in other proteins such as complement protein C1q, C-type lectins known as collectins, and tenascins. However, all these proteins recognize different targets, and are functionally distinct. Ficolin 1 encoded by FCN1 is predominantly expressed in the peripheral blood leukocytes, and has been postulated to function as a plasma protein with elastin-binding activity. [provided by RefSeq]

Other Designations OTTHUMP00000022519|ficolin (collagen/fibrinogen domain-containing) 1|ficolin 1

Disease

- [Arthritis](#)
- [Genetic Predisposition to Disease](#)