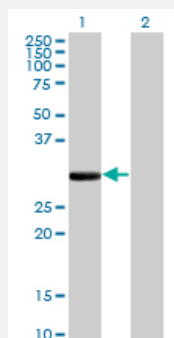


# FCN1 monoclonal antibody (M06), clone 2B7

Catalog # H00002219-M06

Size 100 ug

## Applications

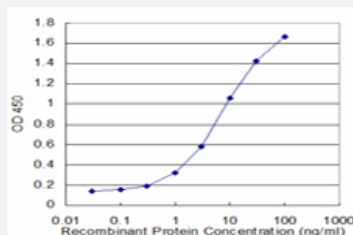


### Western Blot (Transfected lysate)

Western Blot analysis of FCN1 expression in transfected 293T cell line by FCN1 monoclonal antibody (M06), clone 2B7.

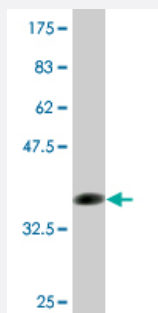
Lane 1: FCN1 transfected lysate(35.1 KDa).

Lane 2: Non-transfected lysate.



### Sandwich ELISA (Recombinant protein)

Detection limit for recombinant GST tagged FCN1 is approximately 0.3ng/ml as a capture antibody.



Western Blot detection against Immunogen (36.74 KDa) .

## Specification

### Product Description

Mouse monoclonal antibody raised against a partial recombinant FCN1.

<b>Immunogen</b>	FCN1 (NP_001994, 201 a.a. ~ 300 a.a) partial recombinant protein with GST tag. MW of the GST tag alone is 26 KDa.
<b>Sequence</b>	SSELRVDLVDFEGNHQFAKYKSFKVADEAEKYKLVLGAFVGGGAGNSLTGHNNNFFSTKDQDN DVSSSNCAEKFQGAWWYADCHASNLNGLYLMGPHEYS
<b>Host</b>	Mouse
<b>Reactivity</b>	Human
<b>Isotype</b>	IgG2a Kappa
<b>Quality Control Testing</b>	Antibody Reactive Against Recombinant Protein. Western Blot detection against Immunogen (36.74 KDa) .
<b>Storage Buffer</b>	In 1x PBS, pH 7.4
<b>Storage Instruction</b>	Store at -20°C or lower. Aliquot to avoid repeated freezing and thawing.

## Applications

- Western Blot (Transfected lysate)

Western Blot analysis of FCN1 expression in transfected 293T cell line by FCN1 monoclonal antibody (M06), clone 2B7.

Lane 1: FCN1 transfected lysate(35.1 KDa).

Lane 2: Non-transfected lysate.

[Protocol Download](#)

- Western Blot (Recombinant protein)

[Protocol Download](#)

- Sandwich ELISA (Recombinant protein)

Detection limit for recombinant GST tagged FCN1 is approximately 0.3ng/ml as a capture antibody.

[Protocol Download](#)

- ELISA

## Gene Info — FCN1

Entrez GeneID [2219](#)

GeneBank Accession# [NM\\_002003](#)

Protein Accession#	<a href="#">NP_001994</a>
Gene Name	FCN1
Gene Alias	FCNM
Gene Description	ficolin (collagen/fibrinogen domain containing) 1
Omim ID	<a href="#">601252</a>
Gene Ontology	<a href="#">Hyperlink</a>
Gene Summary	<p>The ficolin family of proteins are characterized by the presence of a leader peptide, a short N-terminal segment, followed by a collagen-like region, and a C-terminal fibrinogen-like domain. The collagen-like and the fibrinogen-like domains are also found separately in other proteins such as complement protein C1q, C-type lectins known as collectins, and tenascins. However, all these proteins recognize different targets, and are functionally distinct. Ficolin 1 encoded by FCN1 is predominantly expressed in the peripheral blood leukocytes, and has been postulated to function as a plasma protein with elastin-binding activity. [provided by RefSeq]</p>
Other Designations	OTTHUMP00000022519 ficolin (collagen/fibrinogen domain-containing) 1 ficolin 1

## Disease

- [Arthritis](#)
- [Genetic Predisposition to Disease](#)