

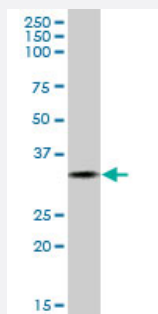
MaxPab®

FCN1 purified MaxPab mouse polyclonal antibody (B01P)

Catalog # H00002219-B01P

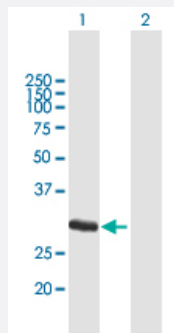
Size 50 ug

Applications



Western Blot (Tissue lysate)

FCN1 MaxPab polyclonal antibody. Western Blot analysis of FCN1 expression in human spleen.



Western Blot (Transfected lysate)

Western Blot analysis of FCN1 expression in transfected 293T cell line ([H00002219-T01](#)) by FCN1 MaxPab polyclonal antibody.

Lane 1: FCN1 transfected lysate(35.86 KDa).

Lane 2: Non-transfected lysate.

Specification

Product Description

Mouse polyclonal antibody raised against a full-length human FCN1 protein.

Immunogen

FCN1 (NP_001994.2, 1 a.a. ~ 326 a.a) full-length human protein.

Sequence

MELSGATMARGLAVLLVFLHIKNLPAQAADTCPEVKVVGLEGSDKLTILRGCPGLPGAPGPKGE
AGVIGERGERGLPGAPGKAGPVGPKGDRGEKGMERGEKGDAGQSQSCATGPRNCKDLLDRGYF
LSGWHTIYLPDCRPLTVLCDMDTDGGGWTVFQRRMDGSVDYRDWAAYKQGFGSQLGEFWLG
NDNIHALTAQGSSELRVLDLDFEGNHQFAKYKSFKVADEAEKYKLVLGAFVGGGAGNSLTGHNN
NFFSTKDQDNDVSSSNCAEKFQGAWWYADCHASNGLYLMGPHESEYANGINWSAAKGYSY
KVSEMKVRPA

Host

Mouse

| | |
|-------------------------|--|
| Reactivity | Human |
| Quality Control Testing | Antibody reactive against mammalian transfected lysate. |
| Storage Buffer | In 1x PBS, pH 7.4 |
| Storage Instruction | Store at -20°C or lower. Aliquot to avoid repeated freezing and thawing. |

Applications

- Western Blot (Tissue lysate)

FCN1 MaxPab polyclonal antibody. Western Blot analysis of FCN1 expression in human spleen.

[Protocol Download](#)

- Western Blot (Transfected lysate)

Western Blot analysis of FCN1 expression in transfected 293T cell line ([H00002219-T01](#)) by FCN1 MaxPab polyclonal antibody.

Lane 1: FCN1 transfected lysate(35.86 KDa).

Lane 2: Non-transfected lysate.

[Protocol Download](#)

Gene Info — FCN1

| | |
|---------------------|---|
| Entrez GeneID | 2219 |
| GeneBank Accession# | NM_002003.2 |
| Protein Accession# | NP_001994.2 |
| Gene Name | FCN1 |
| Gene Alias | FCNM |
| Gene Description | ficolin (collagen/fibrinogen domain containing) 1 |
| Omim ID | 601252 |
| Gene Ontology | Hyperlink |

Gene Summary

The ficolin family of proteins are characterized by the presence of a leader peptide, a short N-terminal segment, followed by a collagen-like region, and a C-terminal fibrinogen-like domain. The collagen-like and the fibrinogen-like domains are also found separately in other proteins such as complement protein C1q, C-type lectins known as collectins, and tenascins. However, all these proteins recognize different targets, and are functionally distinct. Ficolin 1 encoded by FCN1 is predominantly expressed in the peripheral blood leukocytes, and has been postulated to function as a plasma protein with elastin-binding activity. [provided by RefSeq]

Other Designations

OTTHUMP00000022519|ficolin (collagen/fibrinogen domain-containing) 1|ficolin 1

Disease

- [Arthritis](#)
- [Genetic Predisposition to Disease](#)