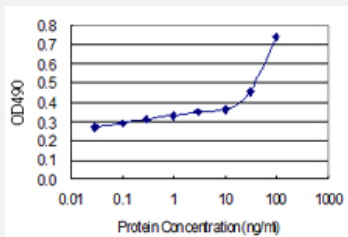


# FCN1 (Human) Matched Antibody Pair

Catalog # H00002219-AP22

Size 1 Set

## Applications



Sandwich ELISA detection sensitivity ranging from 10 ng/ml to 100 ng/ml.

## Specification

<b>Product Description</b>	This antibody pair set comes with a matched antibody pair to detect and quantify the protein level of human FCN1.
<b>Reactivity</b>	Human
<b>Quality Control Testing</b>	Standard curve using recombinant protein ( H00002219-P01 ) as an analyte. Sandwich ELISA detection sensitivity ranging from 10 ng/ml to 100 ng/ml.
<b>Supplied Product</b>	Antibody pair set content: 1. Capture antibody: rabbit MaxPab® affinity purified polyclonal anti-FCN1 (100 ug) 2. Detection antibody: mouse purified polyclonal anti-FCN1 (20 ug) *Reagents are sufficient for at least 1-2 x 96 well plates using recommended protocols.
<b>Storage Instruction</b>	Store reagents of the antibody pair set at -20°C or lower. Please aliquot to avoid repeated freeze thaw cycle. Reagents should be returned to -20°C storage immediately after use.

## Applications

- ELISA Pair (Recombinant protein)

[Protocol Download](#)

## Gene Info — FCN1

**Entrez GeneID** [2219](#)**Gene Name** FCN1**Gene Alias** FCNM**Gene Description** ficolin (collagen/fibrinogen domain containing) 1**Omim ID** [601252](#)**Gene Ontology** [Hyperlink](#)

**Gene Summary**

The ficolin family of proteins are characterized by the presence of a leader peptide, a short N-terminal segment, followed by a collagen-like region, and a C-terminal fibrinogen-like domain. The collagen-like and the fibrinogen-like domains are also found separately in other proteins such as complement protein C1q, C-type lectins known as collectins, and tenascins. However, all these proteins recognize different targets, and are functionally distinct. Ficolin 1 encoded by FCN1 is predominantly expressed in the peripheral blood leukocytes, and has been postulated to function as a plasma protein with elastin-binding activity. [provided by RefSeq]

**Other Designations** OTTHUMP00000022519|ficolin (collagen/fibrinogen domain-containing) 1|ficolin 1

## Disease

- [Arthritis](#)
- [Genetic Predisposition to Disease](#)